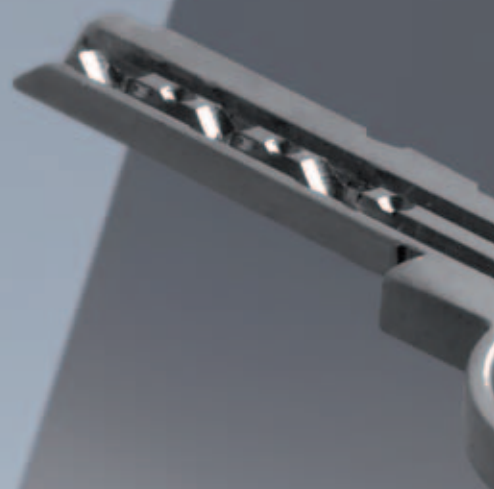


LOCKR



ENG

ojmar



LOCKR LOCKING SOLUTIONS FOR LOCKERS

Each site has particular requirements. Our range of cam locks is intended for facilities where lockers are dedicated to one specific user.

They are manufactured from materials of proven durability, providing a simple but solid and reliable solution for both wet and dry areas.



LOCKR 357 & 377



LOCKR 557 & 577




LOCKR 603 & 617




LOCKR LATCH

SOLID BRASS CAM LOCKS
WITH 6 STAINLESS STEEL PINS
FOR WET AREAS

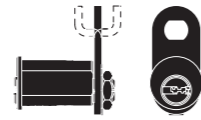
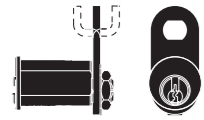
REF. 557 & 577 





A range of locks particularly suited to wet areas. The stainless steel pins, a unique solution in the industry, make the locks highly resistant to corrosion and constant use.

SOLID BRASS CAM LOCKS
WITH 6 STAINLESS STEEL PINS
FOR WET AREAS

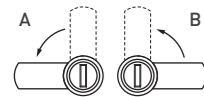
REF. 357 & 377 

A range of locks particularly suited to wet areas. The stainless steel pins, a unique solution in the industry, make the locks highly resistant to corrosion and constant use.



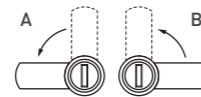
MODEL	Ref. 557 & 577 	MODEL	Ref. 357 & 377 
MAIN FEATURES		MAIN FEATURES	
FIXING HOLES	Nut	FIXING HOLES	Nut
ROTATION	90°	ROTATION	90°
KEY	Standard	KEY	Security key
PINS	6-pinned stainless steel	PINS	6-pinned stainless steel
DIFFERS	Up to 1600	DIFFERS	Up to 1600
MASTER KEYS	Yes	MASTER KEYS	Yes
FINISH	 Chrome	FINISH	 Chrome
MATERIALS		MATERIALS	
CASING AND CYLINDER	Chrome plated brass	CASING AND CYLINDER	Chrome plated brass
KEY	Nickel plated brass	KEY	Argentan alloy (Nickel plated)
PINS	Stainless steel	PINS	Stainless steel
DIMENSIONS		DIMENSIONS	
Ø HEAD	Ø 22 mm	Ø HEAD	Ø 22 mm
HEAD THICKNESS	2 mm	HEAD THICKNESS	2 mm
LENGTH 557 (L)	23,5 mm	LENGTH 357 (L)	23,5 mm
LENGTH 577 (L)	30 mm	LENGTH 377 (L)	30 mm
MAXIMUM DOOR THICKNESS 557	18,5 mm	MAXIMUM DOOR THICKNESS 357	18,5 mm
MAXIMUM DOOR THICKNESS 577	25 mm	MAXIMUM DOOR THICKNESS 377	25 mm
CAM DIMENSIONS	20 x 3 x R mm	CAM DIMENSIONS	20 x 3 x R mm
DIMENSION OF FIXING HOLE	16,2 x 19,2 mm	DIMENSION OF FIXING HOLE	16,2 x 19,2 mm
MECHANICAL REQUIREMENTS		MECHANICAL REQUIREMENTS	
N° OF CYCLES	60,000 machine cycles according to LGA	N° OF CYCLES	60,000 machine cycles according to LGA

POSITION



Key can only be removed in closed position.

POSITION

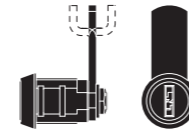






Key can only be removed in closed position.

10-WAFER CYLINDER CAM LOCKS
FOR DRY AREAS

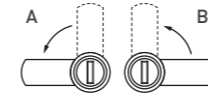
REF. 603 

A range of cam locks for dry-area facilities: gyms, shopping centres, schools, etc. Designed specifically for thin (e.g. metal) locker doors.



MODEL	Ref. 603 	MODEL	Ref. 617 
MAIN FEATURES		MAIN FEATURES	
FIXING HOLES	Clip or nut	FIXING HOLES	Nut
ROTATION	90°	ROTATION	90°
CYLINDER	10 wafers	CYLINDER	10 wafers
KEY	Reversible with round head	KEY	Reversible with round head
DIFFERS	Up to 4000	DIFFERS	Up to 4000
MASTER KEYS	Yes	MASTER KEYS	Yes
FINISH	 Chrome	FINISH	 Chrome
MATERIALS		MATERIALS	
INTERNAL PARTS	Die cast	INTERNAL PARTS	Die cast
CYLINDER	Die cast	CYLINDER	Die cast
KEY	Nickel plated brass	KEY	Nickel plated brass
SPRINGS	Stainless steel	SPRINGS	Stainless steel
DIMENSIONS		DIMENSIONS	
Ø HEAD	Ø 23 mm	Ø HEAD	Ø 24,3 mm
HEAD THICKNESS	6,5 mm	HEAD THICKNESS	4,5 mm
LENGTH (L)	22 mm	LENGTH (L)	30 mm
CAM DIMENSIONS	15x3xR mm	CAM DIMENSIONS	15x3xR mm
MINIMUM DOOR THICKNESS	1 mm	MINIMUM DOOR THICKNESS	1 mm
MAXIMUM DOOR THICKNESS	13 mm	MAXIMUM DOOR THICKNESS	23,5 mm
DIMENSION OF FIXING HOLE	16,2x19,2 mm	DIMENSION OF FIXING HOLE	16,2x20,2 mm
MECHANICAL REQUIREMENTS		MECHANICAL REQUIREMENTS	
N° OF CYCLES	60,000 machine cycles according to LGA	N° OF CYCLES	60,000 machine cycles according to LGA

POSITION

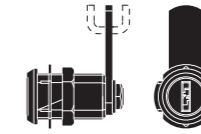


Key can only be removed in closed position.

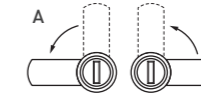
10-WAFER CYLINDER CAM LOCKS
FOR DRY AREAS

REF. 617 

A range of locks designed for lockers with thicknesses of up to 23,5 mm.




POSITION



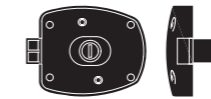
Key can only be removed in closed position.




LATCH-BOLT LOCKS FOR DRY AREAS

REF. 34 

Latch bolt Lock with a 10-wafer interchangeable cylinder specifically designed for lockers in dry areas.



MODEL	Ref. 34 
MAIN FEATURES	
CYLINDER	10-wafer, Die cast Interchangeable Cylinder
KEY	Standard round head and reversible
DIFFERS	Up to 4000
MATERIALS	
LOCK BODY	Polyamide + fibreglass
CASING AND CYLINDER	Die cast
PINS	-
KEY	Nickel plated brass
DIMENSIONS	
LOCK BODY LENGTH	100 mm
LOCK BODY HEIGHT	85 mm
LOCK BODY THICKNESS	25 mm
LATCH DIMENSIONS	24 x 11,5 mm
MINIMUM DOOR THICKNESS	1 mm
MAXIMUM DOOR THICKNESS	23 mm
LATCH STROKE	12 mm
FIXING HOLES	75,5 x 49 mm
SCREW FIXING HOLE	M5 COUNTERSUNK SCREW

PRODUCT REFERENCES

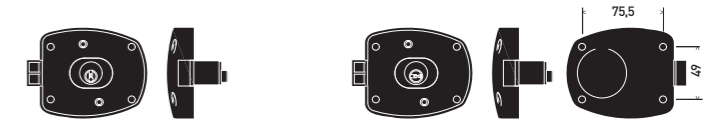
RIGHT **34.D**
LEFT **34.I**



LATCH-BOLT LOCKS FOR WET AREAS

REF. 35 & 36  

The interchangeable core with 6 stainless steel pins makes these models highly resistant to corrosion.

Model 36 is supplied with a security key, which has an exclusive and registered profile. The key is flat and reversible and thus pleasant and easy to use.



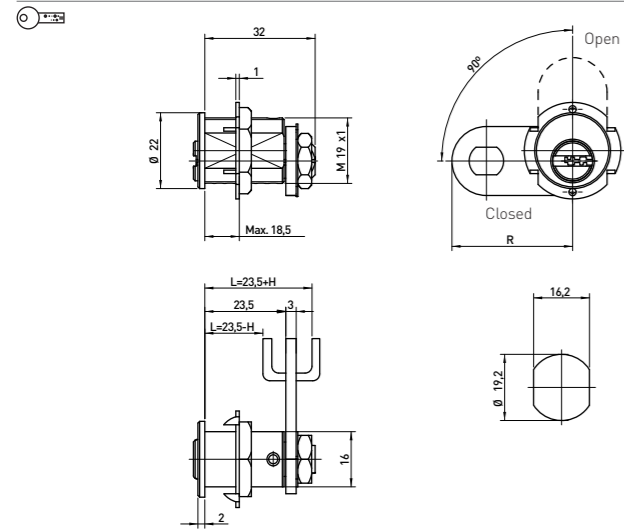
MODEL	Ref. 35 	Ref. 36 
MAIN FEATURES		
CYLINDER	Interchangeable solid brass core with 6 stainless steel pins	Interchangeable solid brass core with 6 stainless steel pins
KEY	Standard	Security key
DIFFERS	Up to 1600	Up to 1600
MATERIALS		
LOCK BODY	Polyamide + fibreglass	Polyamide + fibreglass
CASING AND CYLINDER	Chrome plated brass	Chrome plated brass
PINS	Stainless steel	Stainless steel
KEY	Nickel plated brass	Argentan alloy (Nickel plated)
DIMENSIONS		
LOCK BODY LENGTH	100 mm	100 mm
LOCK BODY HEIGHT	85 mm	85 mm
LOCK BODY THICKNESS	25 mm	25 mm
LATCH DIMENSIONS	24 x 11,5 mm	24 x 11,5 mm
MINIMUM DOOR THICKNESS	1 mm	1 mm
MAXIMUM DOOR THICKNESS	23 mm	23 mm
LATCH STROKE	12 mm	12 mm
FIXING HOLES	75,5 x 49 mm	75,5 x 49 mm
SCREW FIXING HOLE	M5 COUNTERSUNK SCREW	M5 COUNTERSUNK SCREW

PRODUCT REFERENCES

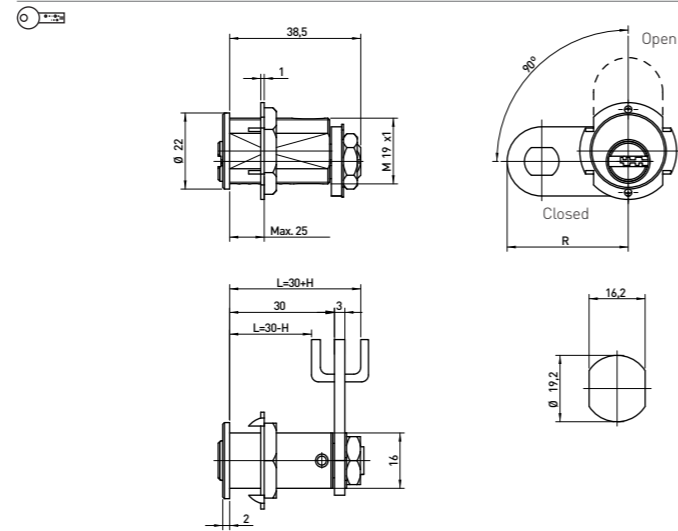
RIGHT **35.D** RIGHT **36.D**
LEFT **35.I** LEFT **36.I**

CAM
LOCKS

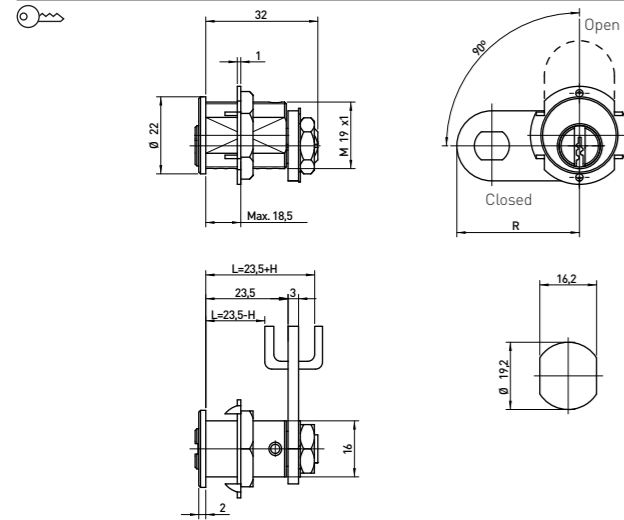
REF. 357



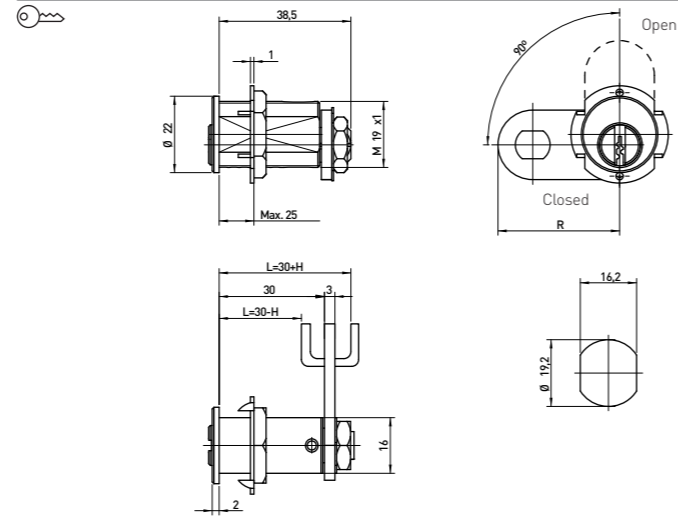
REF. 377



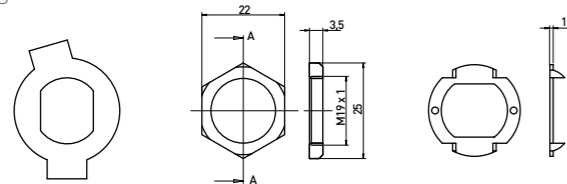
REF. 557



REF. 577

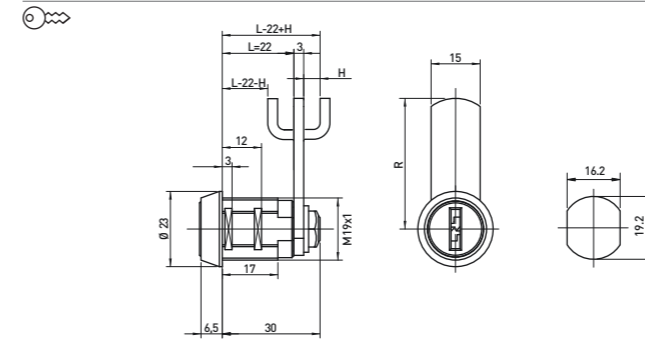


ACCESSORIES

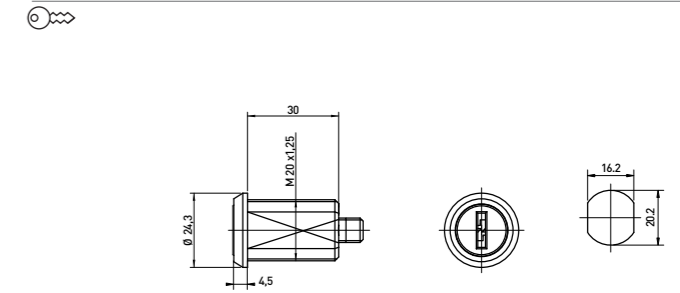


CAM
LOCKS

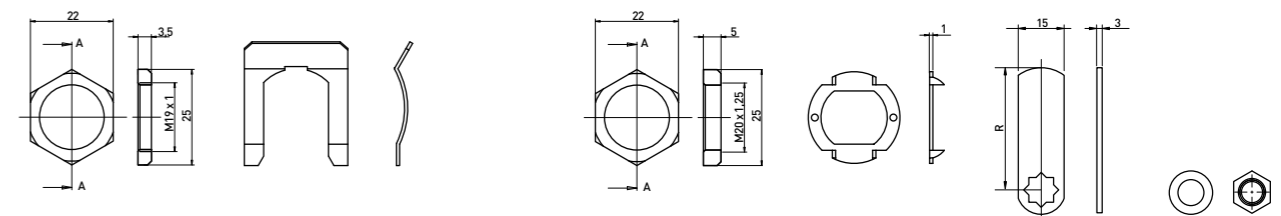
REF. 603



REF. 617

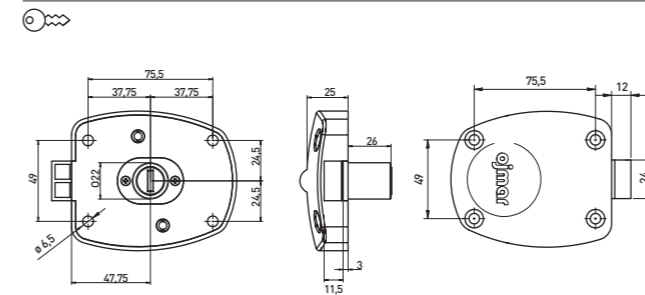


ACCESSORIES

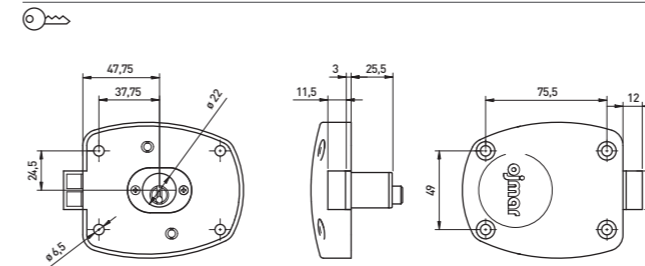


LATCH-BOLT
LOCKS

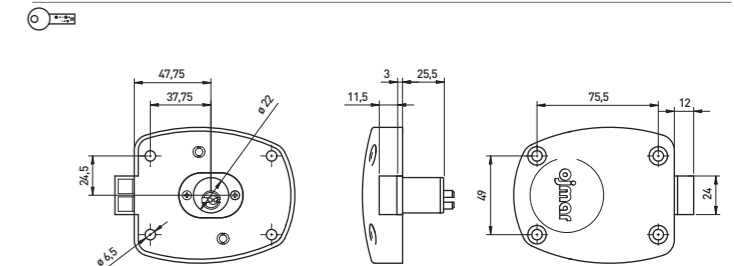
REF. 34

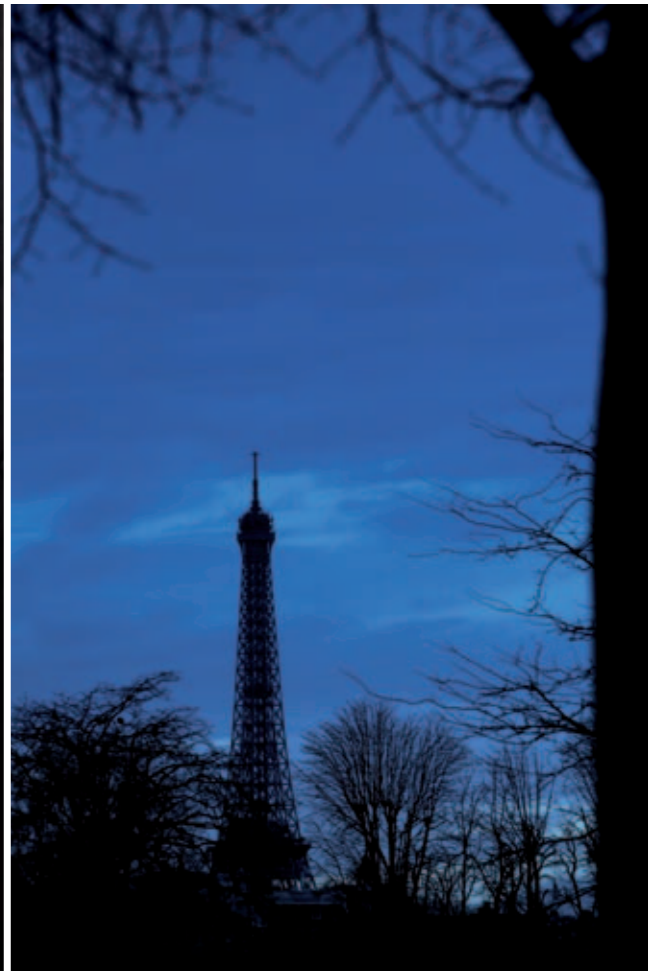
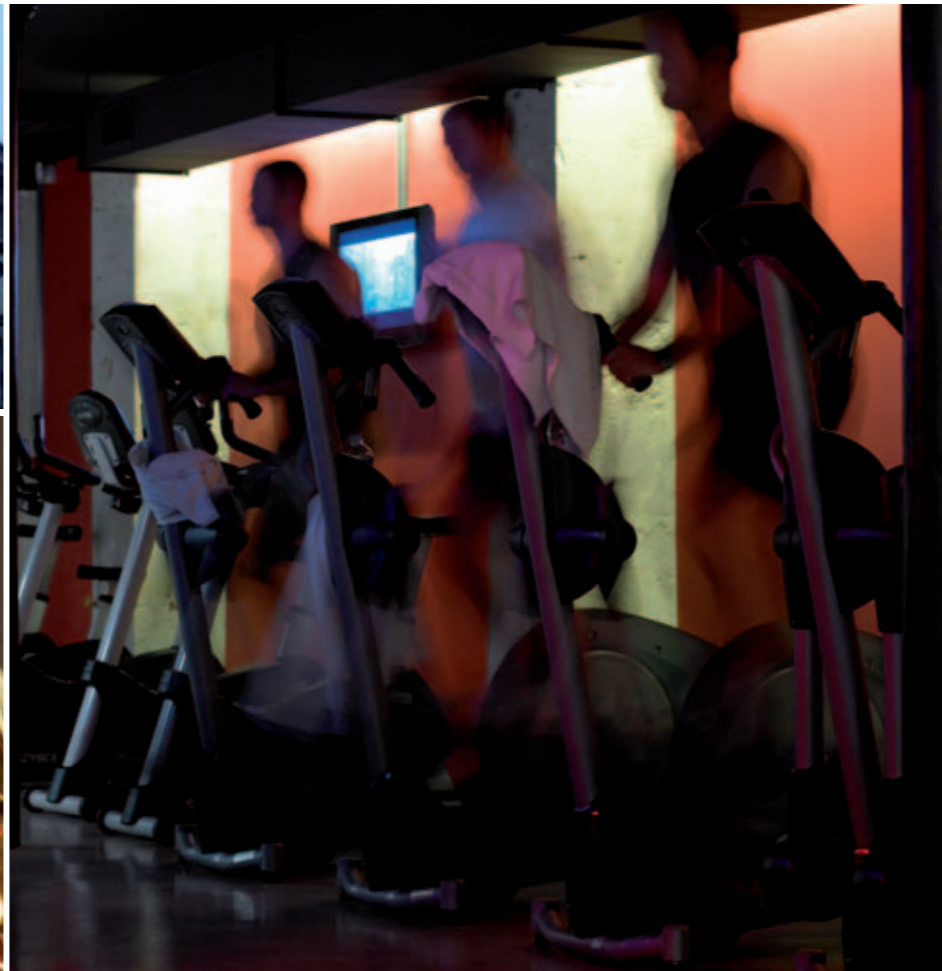


REF. 35



REF. 36







OJMAR, S.A.
Polígono Industrial de Lerun, s/n
20870 Elgoibar
Gipuzkoa
SPAIN
T. +34 943 748484
F. +34 943 748490
www.ojmar.com

