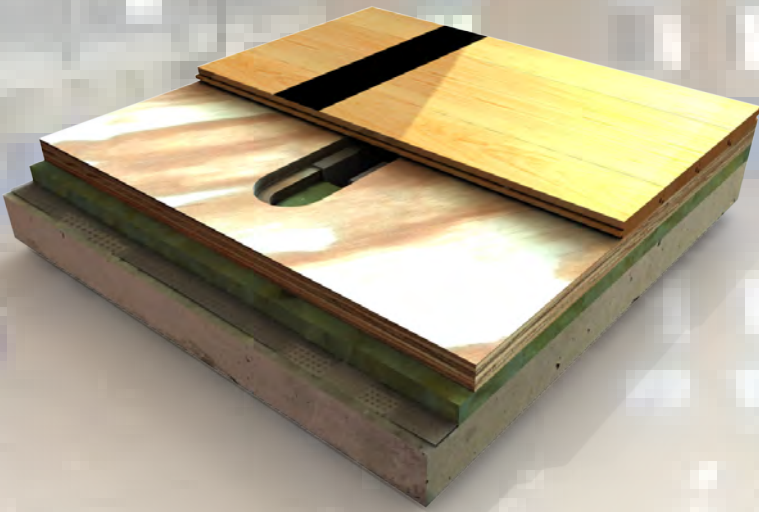




STRENGTH & PERFORMANCE...

IN A LOW PROFILE DESIGN



The Bio-Channel LP system is a value engineered version of the Bio-Channel Star system. This system still utilizes all the features of Bio-Channel Star in a reduced, yet high quality form that provides economical value to the facility owner. The mold resistant Zero/G® shock pad minimizes vibration, providing uniformity in performance and better athletic endurance.

-  *Heavy duty steel anchors allow lateral movement for natural expansion of the maple preventing buckling or damage to the structure*
-  *Continuous subfloor system providing uniformity and support*



robbinsfloor.com | 1.800.543.1913

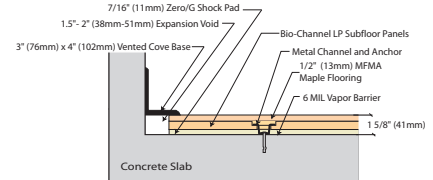
Robbins, Inc. | 4777 Eastern Avenue | Cincinnati, OH 45226

Product Specifications

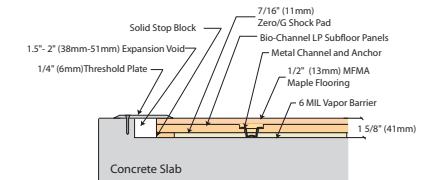
System Type	Anchored Resilient
Slab Depression	1 5/8" (41mm) with 1/2" (13mm) maple
Channel	14 Gauge Anchor Channel
Surface- MFMA Northern Hard Maple	Robbins Continuous Strip® XL (FJ)
Anchorage	2" Anchor Spike
Subfloor Construction	Nominal 3/4" x 24" x 96" subfloor sheathing that has factory prepared anchor slots
Resilience Layer	7/16" Flat Zero/G® Shock Pad
Vapor Barrier	6 MIL Polyethylene
Optional Construction	Contact a Robbins Representative for Alternative Systems
LEED Contributions	MR credit 4, 5, & 7 IEQ 4.1, 4.2, 4.3, 4.4 FSC® Lumber Available *Credits are based on products selected and location of facility
Warranty	1 year Industry Standard with optional Extended Warranty Program (Egis Floorlife)



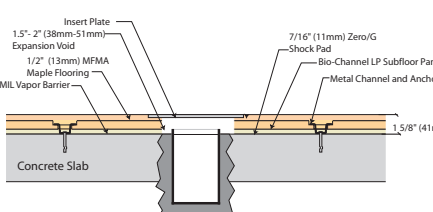
Wall View



Threshold View



Equipment View



Bio-Channel Family Reference Facilities

- Grand Canyon University
- Whitman College
- Comite Olimpico- Chile
- Lincoln High School
- SMU Practice Facility
- University of Alabama- Recreation Center



robbinsfloor.com | 1.800.543.1913