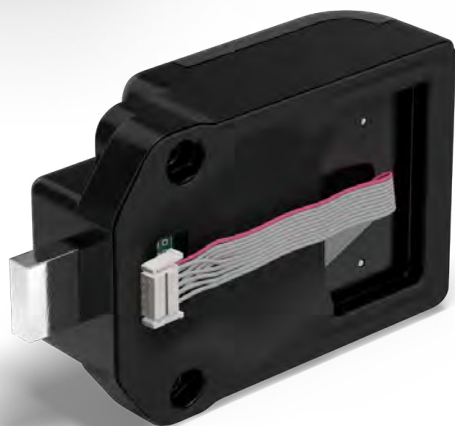


Standard Body



RFID COMPATIBILITY

13.56 MHz RFID Standards (ISO 14443A - ISO 14443B - ISO 15693) including HID™ iCLASS™, MIFARE (Classic 1K-4K, Ultralight, DESFire EV1/EV2, Plus S), FeliCa, LEGIC Advant, and HID™ SEOS™

PRODUCT FEATURES

- Capacitive wake for touchless operation
- All metal housing
- IP55 rated, FCC, CE, and IC certified
- Brushed nickel or black finish
- Slim 0.41" (10.35mm) profile
- Visual and audible indicators
- Advanced auto unlock
- ADA compliant
- Non-handed
- With or without pull handle
- Available in standard, vertical, or horizontal body type

FUNCTIONALITY

- Dual functionality - shared or assigned use
- Manage with the Basic or Advanced system

INSTALLATION

- Designed for both new or retrofit installations
- Adaptable to multiple door thicknesses
- 1/2" (12.7mm) motorized deadbolt locking mechanism
- Snap-lock cable connector (patented)

POWER

- Powered by 4 premium AA batteries
- For expected battery life, refer to Battery Life Estimate Chart

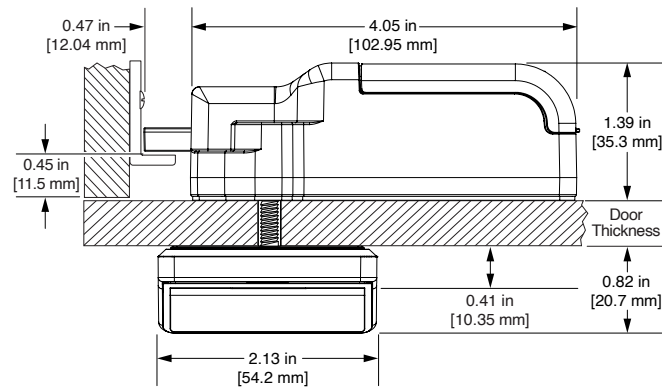
SUPPORT

- Onsite product updates
- Lifetime support
- 2-year warranty

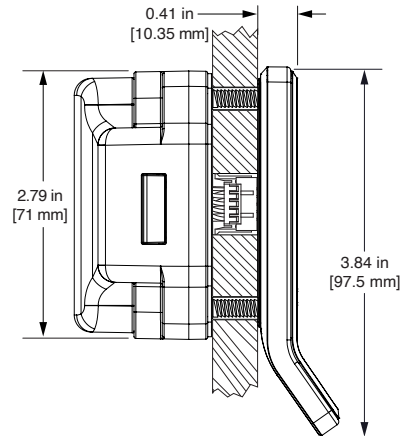


Standard Body

TOP VIEW



SIDE VIEW



FRONT VIEW

