

LONSEAL[®] FLOORING

LONCOIN II FLECKS

Durable, Functional, and Hides Scuffing

The Loncoin series boasts a coin surface embossing that delivers a striking directional design a decorative touch that provides style and enhanced traction. LONCOIN II FLECKS adds a dazzling fleck coloration that provides camouflage for easier maintenance.

FEATURES *(data shown is nominal):*

- Roll Width: 6 ft. (1.8 m) or 8 ft. (2.4 m)
- Roll Length: 60 ft. (18.3 m)
- Overall Thickness: 0.100 in. (2.5 mm)
- Wear Layer Thickness: 0.032 in. (0.8 mm)
- Weight: 0.8 lbs./sq. ft. (3.9 kg/m²)

ASTM F1303 CLASSIFICATION:

Type I, Grade 1, Class B, Commercial Use

CERTIFIED:

FloorScore[®]

EXCLUSIVE LONSEAL[®] FORMULATIONS:

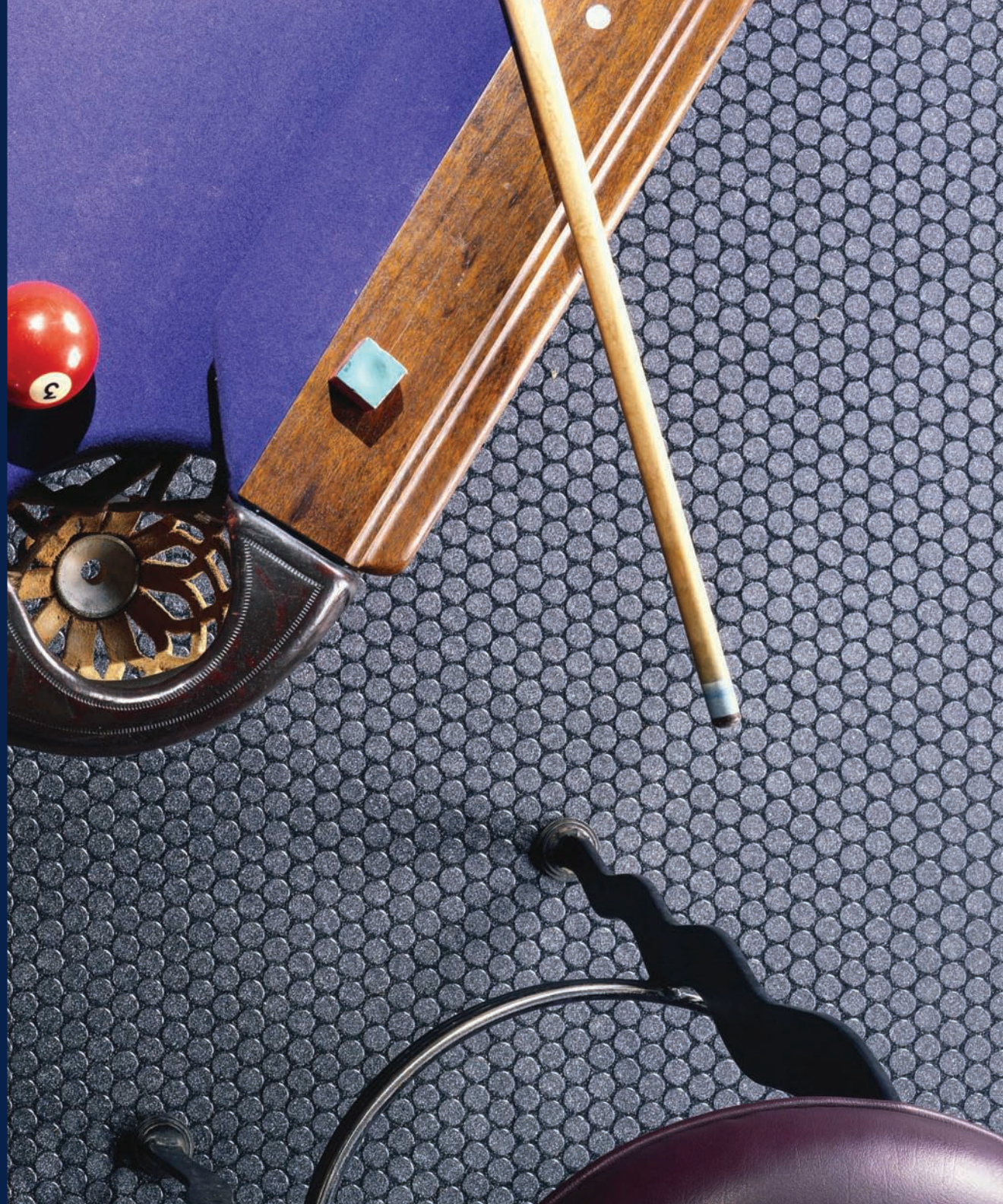
GreenAir[®] & GreenMedic[®]

LEEDv4/4.1 CONTRIBUTION B & C Interiors:

- Environmental Product Declarations Option 1
- Sourcing of Raw Materials Option 2
- Low-Emitting Materials
- 20-40% Post-Industrial Recycled Content

* Please note that #C150 Onyx, #C152 Sapphire, #C154 Sandstone, and #C157 Moonstone are available in both 6 foot (1.83 m) and 8 foot (2.438 m) rolls. All other colors are available in 6 foot (1.83 m) rolls only unless custom ordered.

⚠ WARNING: Cancer and Reproductive Harm-
www.P65Warnings.ca.gov



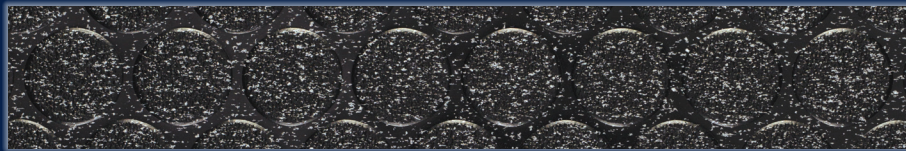


Custom Color

C150 (6') C8150 (8')
Onyx*



C152 (6') C8152 (8')
Sapphire*



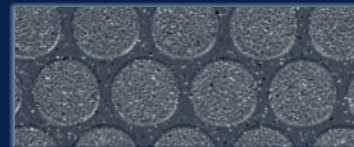
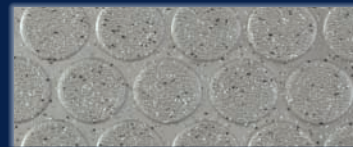
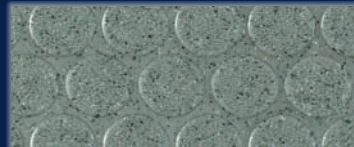
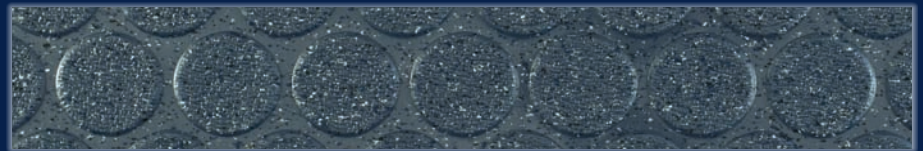
C154 (6') C8154 (8')
Sandstone*

C155 (6' only)
Jade

C157 (6') C8157 (8')
Moonstone

C158 (6' only)
Silicon

C159 (6' only)
Sodalite



LONSEAL, INC.

928 E. 238TH STREET, CARSON, CA, 90745

310.830.7111

WWW.LONSEAL.COM

Printing limitations may not represent the true color of the product. If color match is critical, please call us to request a sample. For the most up-to-date color choices, go to LONSEAL.COM.