

LONSEAL[®]

FLOORING

LONCOIN II

Durable and Functional

The Loncoin series boasts a coin surface embossing that delivers a striking directional design a decorative touch that provides style, enhanced traction, functional, and hides scuffing. LONCOIN II features a slight texture on the coin stamping which gives surface grip and helps mask scuffing.

FEATURES *(data shown is nominal):*

- Roll Width: 6 ft. (1.8 m) or 8 ft. (2.4 m)
- Roll Length: 60 ft. (18.3 m)
- Overall Thickness: 0.100 in. (2.5 mm)
- Wear Layer Thickness: 0.036 in. (0.9 mm)
- Wear Layer Thickness (CTB736): 0.032 in. (0.8 mm)
- Weight: 0.8 lbs./sq. ft. (4.0 kg/m²)

ASTM F1303 CLASSIFICATION:

Type I, Grade 1, Class B, Commercial Use

POST-INDUSTRIAL RECYCLED CONTENT:

20%-40%

CERTIFIED:

FloorScore®

EXCLUSIVE LONSEAL® FORMULATIONS:

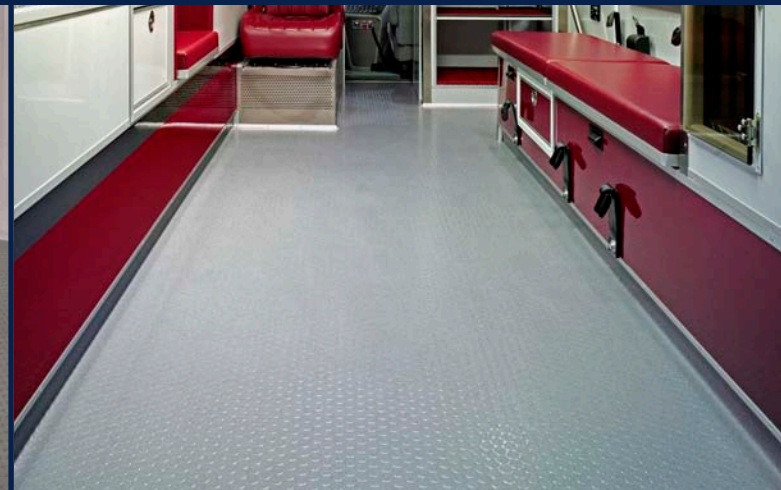
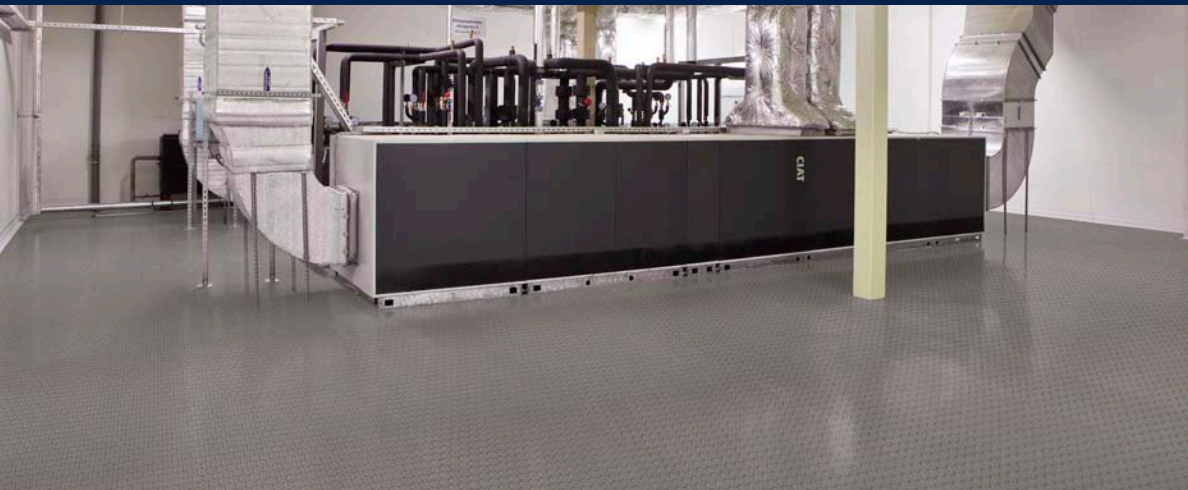
GreenAir® & GreenMedic®

** #CN183 Sonic Gray and #CN187 Cerulean Blue are iridescent colors and their shades will change depending on the viewing angle. Please request a sample swatch for color accuracy.*

*** #CTB736 Stone Gray is not antimicrobial.*

⚠ WARNING: Cancer and Reproductive Harm-
www.P65Warnings.ca.gov





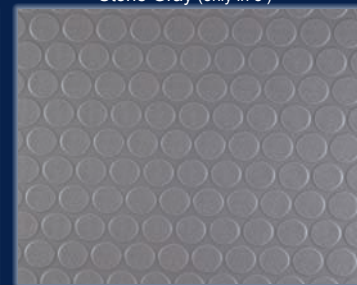
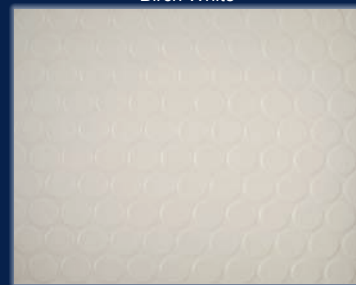
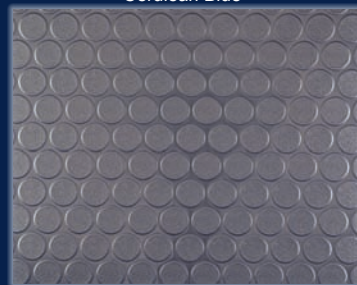
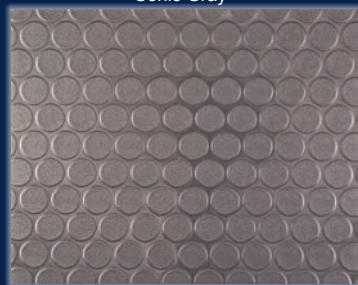
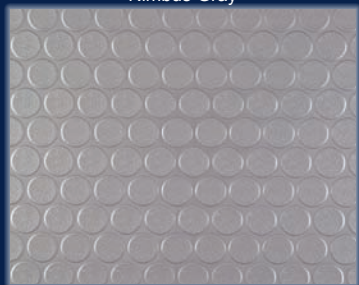
CN181
Nimbus Gray

CN183
Sonic Gray*

CN187
Cerulean Blue*

CN190
Birch White

CTB736
Stone Gray (only in 8'')**



LONSEAL, INC.

928 E. 238TH STREET, CARSON, CA, 90745

310.830.7111

WWW.LONSEAL.COM

Printing limitations may not represent the true color of the product. If color match is critical, please call us to request a sample. For the most up-to-date color choices, go to LONSEAL.COM.