

LONSEAL[®]

FLOORING

LONPLATE II

Extreme Durability

Every bit as tough as the original but with smaller embossing and wider spacing, LONPLATE II offers a similar steel-plate pattern that combines the durability of industrial design with six deeply saturated colors.

FEATURES *(data shown is nominal / 8 ft. have a thinner backing layer):*

- Roll Width: 6 ft. (1.8 m) or 8 ft. (2.4 m)
- Roll Length: 60 ft. (18.3 m)
- Overall Thickness 6 ft.: 0.120 in. (3.0 mm)
- Overall Thickness 8 ft.: 0.100 in. (2.5 mm)
- Wear Layer Thickness: 0.040 in. (1.0 mm)
- Weight 6ft.: 0.8 lbs./sq. ft. (3.9 kg/m²)
- Weight 8ft.: 0.6 lbs./sq. ft. (3.0 kg/m²)

MEETS FMVSS 302:

CFR 49 §571.302 Flammability of Interior Materials

ASTM F1303 CLASSIFICATION:

Type I, Grade 1, Class B, Commercial Use

CERTIFIED:

FloorScore[®]

EXCLUSIVE LONSEAL[®] FORMULATIONS:

GreenAir[®] & GreenMedic[®]

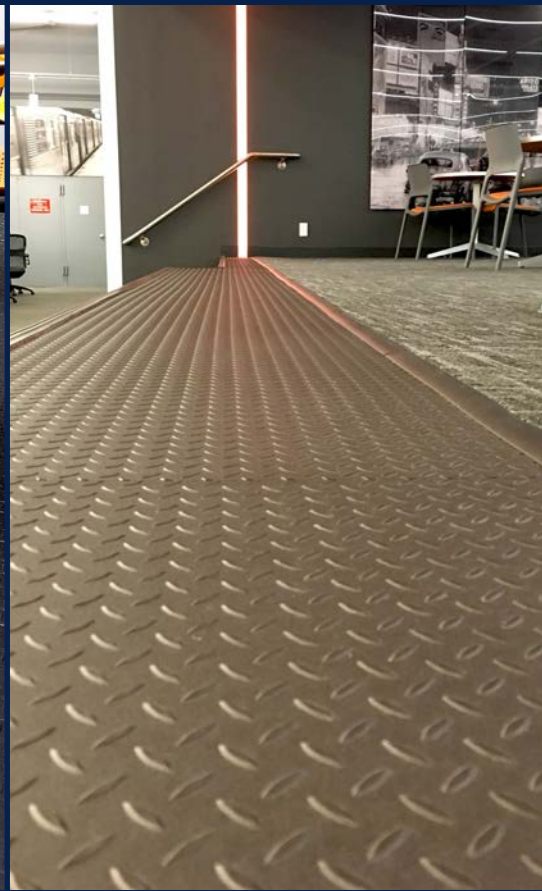
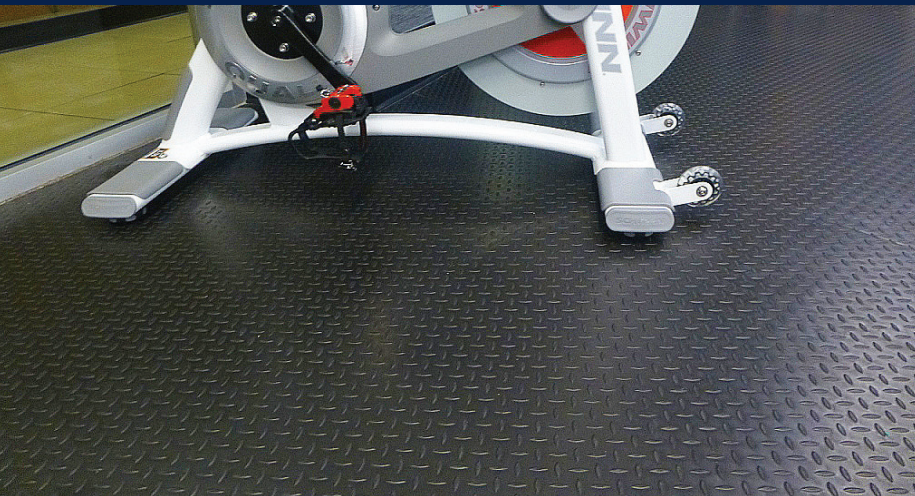
LEEDv4/4.1 CONTRIBUTION B & C Interiors:

- Environmental Product Declarations Option 1
- Sourcing of Raw Materials Option 2
- Low-Emitting Materials
- Pre-Consumer (Post-Industrial) Recycled Content

#P421 Mica, #P424TX Gunpowder and #P443TXM Midnight are available in both 6 foot (1.83m) and 8 foot (2.438m) rolls (8' rolls have a thinner gage of 2.0mm thickness). All other colors are available in 6 foot (1.83m) rolls only unless custom ordered.

⚠ WARNING: Cancer and Reproductive Harm-
www.P65Warnings.ca.gov





P411
Putty

P419TX
Brick



P421 (6 ft.) P8421 (8 ft.)
Mica



P424
Gunmetal

P424TX (6 ft.) P8424TX (8 ft.)
Gunpowder

P443
Gun Black

P443TXM (6ft.) P8443TXM (8 ft.)
Midnight



LONSEAL, INC.

928 E. 238TH STREET, CARSON, CA, 90745

310.830.7111

WWW.LONSEAL.COM

Printing limitations may not represent the true color of the product. If color match is critical, please call us to request a sample. For the most up-to-date color choices, go to LONSEAL.COM.