

LONSEAL[®]

FLOORING

LONPOINT[®] MOONWALK

Unique, Fashionable Coin Pattern

LONPOINT MOONWALK is similar to our Loncoin series, but is distinguished by smaller (half-inch diameter) and more widely-spaced coin stamping. The slip-resistance feature makes it ideal for busy traffic areas like break rooms and hallways while the intriguing color scheme adds a distinctive designer touch.

FEATURES *(data shown is nominal):*

- Roll Width: 6 ft. (1.8 m)
- Roll Length: 60 ft. (18.3 m)
- Overall Thickness: 0.080 in. (2.0 mm)
- Wear Layer Thickness: 0.032 in. (0.8 mm)
- Weight: 0.7 lbs./sq. ft. (3.3 kg/m²)

MEETS FMVSS 302:

CFR 49 §571.302 Flammability of Interior Materials

ASTM F1303 CLASSIFICATION:

Type I, Grade 1, Class B, Commercial Use

CERTIFIED:

FloorScore[®]

EXCLUSIVE LONSEAL FORMULATIONS:

GreenAir[®] & GreenMedic[®]

LEEDv4/4.1 CONTRIBUTION B & C Interiors:

- Environmental Product Declarations Option 1
- Sourcing of Raw Materials Option 2
- Low-Emitting Materials
- Pre-Consumer (Post-Industrial) Recycled Content

** #P352 Sapphire and #P354 Graphite are iridescent in color, shifting from gray to blue as the angle of the view changes. Please request a sample swatch for color accuracy.*

⚠ WARNING: Cancer and Reproductive Harm-
www.P65Warnings.ca.gov





P345
Blue

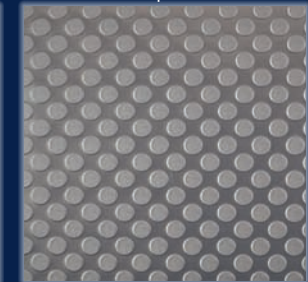
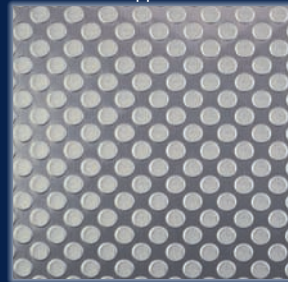
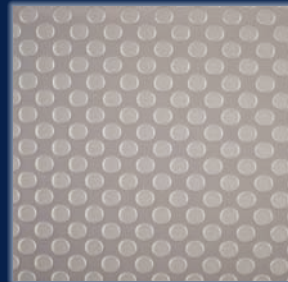
P348
Slate

P351
Platinum

P352
Sapphire*

P353
Black

P354
Graphite*



LONSEAL, INC.

928 E. 238TH STREET, CARSON, CA, 90745

310.830.7111

WWW.LONSEAL.COM

Printing limitations may not represent the true color of the product. If color match is critical, please call us to request a sample. For the most up-to-date color choices, go to LONSEAL.COM.