

# LONSEAL<sup>®</sup>

## FLOORING

### LONWOOD<sup>®</sup>

### PERFORMA

*Endurance, Multi-Purpose Fitness Flooring*

LONWOOD PERFORMA features an anti-fatigue, cushioned-step, closed-cell foam-backing that is designed specifically for high-traffic and high-impact aerobic and fitness activities. A wood-grain sheet, it is ergonomically designed, sound absorbing and helps prevent injuries. Ideal for fitness, gym, and yoga (including hot yoga) applications.

**FEATURES** *(data shown is nominal):*

Roll Width: 6 ft. (1.8 m)  
Roll Length: 60 ft. (18.3 m)  
Overall Thickness: 0.22 in. (5.5 mm)  
Wear Layer Thickness: 0.02 in. (0.5 mm)  
Weight: 1.3 lbs./sq. ft. (6.2 kg/m<sup>2</sup>)

**MEETS NCAA:**

Basketball Rebound Requirements (49" - 54")

**ASTM F1303 CLASSIFICATION:**

Type I, Grade 1, Class C, Commercial Use

**ASTM F2772 CLASSIFICATION:**

Force Reduction Class 1

**CERTIFIED:**

FloorScore<sup>®</sup>

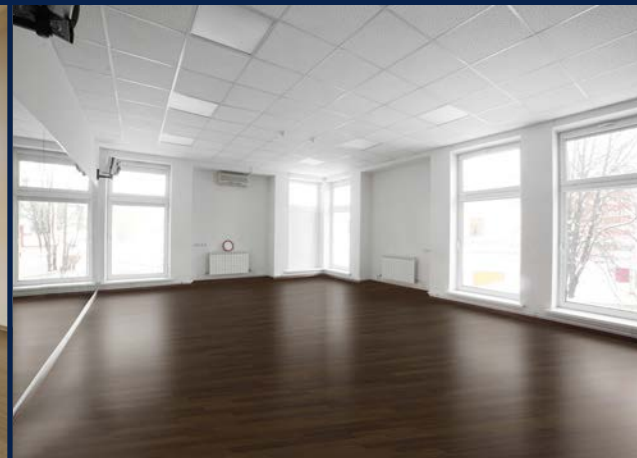
**EXCLUSIVE LONSEAL FORMULATIONS:**

GreenAir<sup>®</sup> & GreenMedic<sup>®</sup>

**LEEDv4/4.1 CONTRIBUTION B & C Interiors:**

Environmental Product Declarations Option 1  
Sourcing of Raw Materials Option 2  
Low-Emitting Materials  
Pre-Consumer (Post-Industrial) Recycled Content



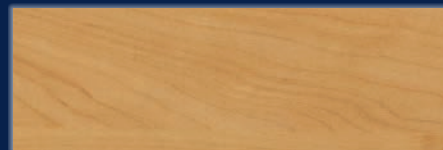
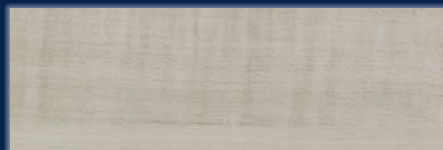


W547  
Sable

W549  
Silver Lake

W550  
Buckwheat

W553  
Mocha Latte



W556  
Summer Breeze

W557  
Morning Fog

W558  
Honey Vanilla

W559  
Golden Oak

