

LOCKR
MULTIFUNCTION



ojmar



2 COIN MODEL

FLEXIBLE AND MULTIPURPOSE COIN LOCK.
THE IDEAL SOLUTION FOR ANY TYPE OF
INSTALLATION THAT REQUIRES A FLEXIBLE
AND RELIABLE LOCKING SYSTEM FOR
TEMPORARY USE.

Designed for intensive use in both dry and wet areas,
it comes in three main product families with their
corresponding varieties according to their function and type
of cylinder lock.

1 coin model: with return or payment

2 coin model: it offers different potential applications. Coin
selection, leaving 2 coins. With or without payment.

Card model: Use of card or combined with coin.

The entire Lockr. Multifunction range is manufactured with
an exchangeable cylinder locker system, a safety device in
the event of losing the key.

The anti-reservation or penalty master key function is
standard in locks for wet areas.



1 COIN MODEL



CARD MODEL



1 COIN LOCK



Like the classic coin lock, the user can use the lock after inserting a coin and gets it back after putting the key in and opening the locker.

It has 3 main versions depending on whether it is used in dry or wet areas. The lock can be easily converted into a coin collecting lock, connecting a box to it (see accessories).



1 COIN LOCK
FOR WET AREAS

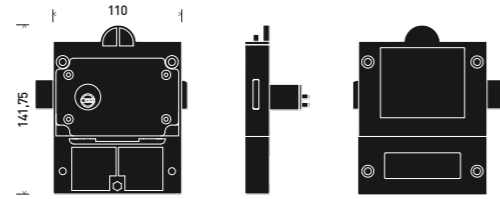


1 COIN LOCK
FOR DRY AREAS

COIN OPERATED LOCK FOR DRY AREAS



Ideal lock for collective-use facilities in dry areas such as fitness clubs, shopping centres, libraries, etc. A simple, solid and reliable solution.



MAIN FEATURES

CYLINDER

CYLINDER	Interchangeable 10 wafer cylinder
DIFFERS	Up to 4000
KEY	Standard round head and reversible
COIN RETURN BUTTON	Yes
COLOUR	Black Lock body, Aluminium Entrance and Button, Silver Adhesive

MATERIALS

LOCK BODY	Polycarbonate + ABS, High impact and torsion resistance
INTERNAL PARTS	Zamak
CYLINDER	Zamak
KEY	Nickel plated brass
SPRINGS	Stainless Steel

DIMENSIONES

LOCK BODY DIMENSION	Length 110 mm Height 142 mm Width 21 mm
SHOOT DIMENSION	25x5mm
MINIMUM - MAXIMUM DOOR THICKNESS	1mm - 23mm
LATCH STROKE	15.5 mm
FIXING HOLES	93.5 mm x 93.5 mm
CYLINDER HOLE	Ø23
SCREW FIXING HOLE	M5 PAN HEAD
KEY THICKNESS	2.5 mm

COIN

MINIMUM - MAXIMUM DIAMETER	20mm - 30mm
MINIMUM - MAXIMUM THICKNESS	1 mm - 3.5 mm
€ AREA COINS	5 cents, 10 cents, 20 cents, 50 cents, 1€, 2€
£ AREA COINS	20p, 50p, 1£, 2£

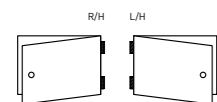
MECHANICAL REQUIREMENTS

N° CYCLES	60,000 Machine cycles according to LGA
-----------	--

REFERENCES

RIGHT LOCK	40.0B00M
LEFT LOCK	40.5B00M

YOU HAVE TO SPECIFY: COIN LANGUAGE



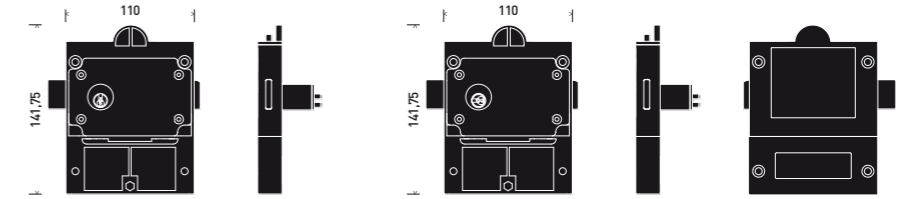
COIN LOCK FOR WET AREAS



All of the materials used in this coin operated lock range are highly rustproof, which makes them the ideal solution for wet area applications.

The stainless steel pins provide greater resistance and security than conventional systems manufactured in brass.

The interchangeable cylinder is an additional security element in the event of the loss or theft of a key. The anti-reservation master key can be used in emergencies to open the locker and help the customer. It also works as an efficient device for preventing Locker Reservation. It allows for opening and closing without having to use a coin, which means that the user will lose his/her coin if he/she does not leave the locker free when required, ensuring availability.



STANDARD

MAIN FEATURES

CYLINDER OR CAM	Interchangeable with 6 pins in stainless steel
DIFFERS	Up to 1600
ANTI-RESERVATION MASTER KEY	Yes
KEY	Standard
ANTI-KEYNBREAKAGE SYSTEM	Yes
EXCLUSIVE PROFILES	No
ASSEMBLY CYLINDER OPTION	Yes
COIN RETURN BUTTON	Yes

COLOUR

CASING	Painted Aluminium
ENTRY AND BUTTON	Black
ADHESIVE	Silver

MATERIALS

CASING	Polycarbonate + ABS, High impact and torsion resistance
INTERNAL PARTS	Zamak
CYLINDER	Chrome plated brass
KEY	Nickel plated brass
SPRINGS	Stainless Steel

DIMENSIONS

LOCK BODY DIMENSION	Length 110 mm Height 142 mm Width 21 mm
SHOOT DIMENSION	25x5 mm
MINIMUM - MAXIMUM DOOR THICKNESS	1 mm - 23mm
LATCH STROKE	15.5mm
FIXING HOLES	93.5 mm x 93.5 mm
CYLINDER HOLE	Ø23
SCREW FIXING HOLE	M5
KEY THICKNESS	2mm

COIN

MINIMUM - MAXIMUM DIAMETER	20 mm - 30 mm
MINIMUM - MAXIMUM THICKNESS	1 mm - 3.5 mm
€ AREA COINS	5 cents, 10 cents, 20 cents, 50 cents, €1, €2
£ AREA COINS	20p, 50p, £1, £2

MECHANICAL REQUIREMENTS

N° CYCLES	60,000 Machine cycles according to LGA
-----------	--

SECURITY

CYLINDER OR CAM	Interchangeable with 6 pins in stainless steel
DIFFERS	Up to 1600
ANTI-RESERVATION MASTER KEY	Yes
KEY	Security key (reversible)
ANTI-KEYNBREAKAGE SYSTEM	Yes
EXCLUSIVE PROFILES	Yes
ASSEMBLY CYLINDER OPTION	Yes
COIN RETURN BUTTON	Yes

CASING	Painted Aluminium
ENTRY AND BUTTON	Black
ADHESIVE	Silver

CASING	Polycarbonate + ABS, High impact and torsion resistance
INTERNAL PARTS	Zamak
CYLINDER	Chrome plated brass
KEY	Aregantal alloy (nickel plated)
SPRINGS	Stainless Steel

LOCK BODY DIMENSION	Length 110 mm, Height 142 mm, Width 21 mm
SHOOT DIMENSION	25x5 mm
MINIMUM - MAXIMUM DOOR THICKNESS	1 mm - 23mm
LATCH STROKE	15.5mm
FIXING HOLES	93.5 mm x 93.5 mm
CYLINDER HOLE	Ø23
SCREW FIXING HOLE	M5
KEY THICKNESS	2.3 mm

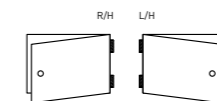
MINIMUM - MAXIMUM DIAMETER	20 mm - 30 mm
MINIMUM - MAXIMUM THICKNESS	1 mm - 3.5 mm
€ AREA COINS	5 cents, 10 cents, 20 cents, 50 cents, €1, €2
£ AREA COINS	20p, 50p, £1, £2

N° CYCLES	60,000 Machine cycles according to LGA
-----------	--

REFERENCES

	WITH STANDARD KEY	WITH SECURITY KEY
RIGHT	40.2B00M	40.1B00M
LEFT	40.7B00M	40.6B00M

YOU HAVE TO SPECIFY: COIN / LANGUAGE





2 COIN LOCK



A multifunction model that allows for multiple applications and is therefore an ideal choice for managers and users.





**FREE SELECTION
2 COIN LOCK**



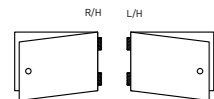
The lock is designed to operate with 2 different coins. The user can choose which coin to insert and therefore does not have to worry about having to have a particular coin.

It is a big advantage in facilities worried about having to constantly give change or in areas near the border where different coins coexist.

REFERENCES

DRY AREA USE		WET AREA USE			
		STANDARD KEYS		SECURITY KEYS	
RIGHT	LEFT	RIGHT	LEFT	RIGHT	LEFT
REF. 40.0B001M	40.5B001M	40.2B001M	40.7B001M	40.1B001M	40.6B001M

YOU HAVE TO SPECIFY: COIN / LANGUAGE



**COIN LOCK
USE OF 2 COINS**

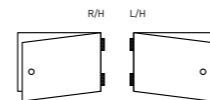


The lock requires inserting 2 coins to work. It is useful in situations where a deposit is important to prevent people from personalising lockers (in the case of locks for wet areas, penalties are higher with the use of the anti-reservation key).

REFERENCES

DRY AREA USE		WET AREA USE			
		STANDARD KEYS		SECURITY KEYS	
RIGHT	LEFT	RIGHT	LEFT	RIGHT	LEFT
REF. 40.0B002M	40.5B002M	40.2B002M	40.7B002M	40.1B002M	40.6B002M

YOU HAVE TO SPECIFY: COIN / LANGUAGE





**2 COIN LOCK
USE OF 2 COINS PAYMENT WITH 1**



The user should insert 2 coins. At the end of use, pressing the return button returns 1 coin and the other stays in the coin collecting box.

The user can open and close the locker as many times as necessary without having to pay again until the user activates the coin return mechanism (pressing the button).

The big advantage of this model lies in the installation being able to recover the lock and locker costs in a relatively short space of time and subsequently raise additional revenue from the lockers to cover maintenance etc.

3 boxes available depending on the required capacity (see accessory section)

Built in box: capacity for approximately 8 coins.

Medium sized box: Capacity for approximately 50 coins.

Large-sized box: Capacity for approximately 100 coins.

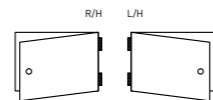
2 COINS. USE OF 2 COINS PAYMENT WITH 1. BUILT IN BOX

DRY AREA USE		WET AREA USE			
RIGHT	LEFT	STANDARD KEYS		SECURITY KEYS	
REF.		RIGHT	LEFT	RIGHT	LEFT
40.0C1001M	40.5C1001M	40.2C1001M	40.7C1001M	40.1C1001M	40.6C1001M

2 COINS. USE OF 2 COINS PAYMENT WITH 1. COIN COLLECTING BOX

ZAMAK		BRASS			
RIGHT	LEFT	STANDARD KEYS		SECURITY KEYS	
REF.		RIGHT	LEFT	RIGHT	LEFT
40.0R1001M	40.5R1001M	40.2R1001M	40.7R1001M	40.1R1001M	40.6R1001M

YOU HAVE TO SPECIFY: COINS / COIN TO PAY / LANGUAGE / COIN COLLECTING BOX.



**2 COIN LOCK
USE OF 2 COINS, PAYMENT WITH 2**



Users have to insert 2 coins to operate the lock. Both coins are retained in the collecting box as payment. Ideal for events or facilities where a higher fee is necessary for using the lockers.

3 boxes available depending on the required capacity (see accessory section)

Built in box: capacity for approximately 8 coins.

Medium sized box: Capacity for approximately 50 coins.

Large-sized box: Capacity for approximately 100 coins.

2 COINS. USE OF 2 COINS WITH PAYMENT. BUILT IN BOX (CAPACITY OF 8 COINS)

ZAMAK		BRASS			
RIGHT	LEFT	STANDARD KEYS		SECURITY KEYS	
REF.		RIGHT	LEFT	RIGHT	LEFT
40.0C1002M	40.5C1002M	40.2C1002M	40.7C1002M	40.1C1002M	40.6C1002M

2 COINS. USE OF 2 COINS WITH PAYMENT. FOR COIN COLLECTING BOX

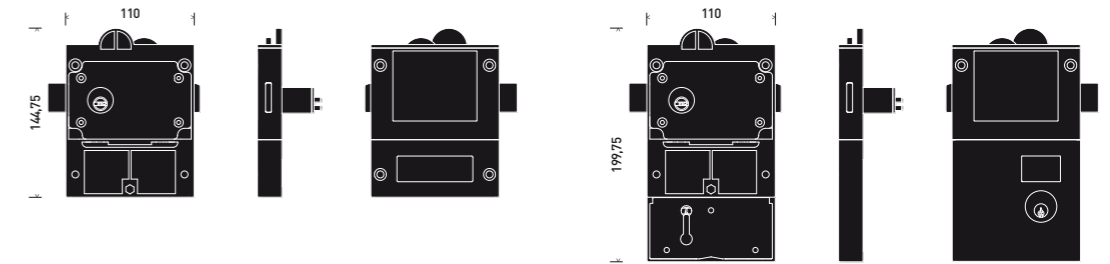
ZAMAK		BRASS			
RIGHT	LEFT	STANDARD KEYS		SECURITY KEYS	
REF.		RIGHT	LEFT	RIGHT	LEFT
40.0R1002M	40.5R1002M	40.2R1002M	40.7R1002M	40.1R1002M	40.6R1002M

YOU HAVE TO SPECIFY: COINS / COIN TO PAY / LANGUAGE / COIN COLLECTING BOX.





2 COIN LOCK MAIN FEATURES



MODEL	DRY AREA USE	WET AREA USE STANDARD	WET AREA USE SECURITY
MAIN FEATURES			
CYLINDER CYLINDER OR CAM	10 wafer Interchangeable cylinder	Interchangeable Solid Brass core with 6 pins in stainless steel. Up to 1600	Interchangeable Solid Brass core with 6 pins in stainless steel. Up to 1600
DIFFERS	Up to 4000	Standard	Security reversible key
KEY	Standard round head and reversible	Yes	Yes
ANTI-RESERVATION MASTER KEY	No	Yes	Yes
ANTI-KEYNBREAKAGE SYSTEM	No	No	Yes
EXCLUSIVE PROFILES	No	Yes	Yes
ASSEMBLY CYLINDER OPTION	No	Yes	Yes
ENTRY LOCKING SYSTEM	Yes	Yes	Yes
COIN RETURN BUTTON	Yes	Yes	Yes
COLOR			
LOCK BODY	Black	Aluminium	Aluminium
COIN SLOT AND BUTTON	Aluminium	Black	Black
ADHESIVE	Silver	Silver	Silver
MATERIALS			
CASING	Polycarbonate + ABS, High impact and torsion resistance	Polycarbonate + ABS, High impact and torsion resistance	Polycarbonate + ABS, High impact and torsion resistance
INTERNAL PARTS	Zamak	Zamak	Zamak
CYLINDER	Zamak	Chrome plated brass	Chrome plated brass
KEY	Nickel plated brass	Nickel plated brass	Nickel plated argentan alloy
SPRINGS	Stainless Steel	Stainless Steel	Stainless Steel
DIMENSIONS			
LOCK BODY DIMENSION	Length 110mm Height 142mm Width 21mm	Length 110mm Height 142mm Width 21mm	Length 110mm Height 142mm Width 21mm
SHOOT DIMENSION	25x5mm	25x5mm	25x5mm
MINIMUM - MAXIMUM DOOR THICKNESS	1mm - 23mm	1mm - 23mm	1mm - 23mm
LATCH STROKE	15.5mm	15.5mm	15.5mm
FIXING HOLES	93.5mm x 93.5mm	93.5mm x 93.5mm	93.5mm x 93.5mm
CYLINDER HOLE	Ø23	Ø23	Ø23
SCREW FIXING HOLE	M5	M5	M5
KEY THICKNESS	2.5mm	2mm	2.3mm
COIN			
MINIMUM - MAXIMUM DIAMETER	20mm - 30mm	20mm - 30mm	20mm - 30mm
MINIMUM - MAXIMUM THICKNESS	1 mm - 3.5 mm	1 mm - 3.5 mm	1 mm - 3.5 mm
€ AREA COINS	5 cents, 10 cents, 20 cents, 50 cents, 1€, 2€	5 cents, 10 cents, 20 cents, 50 cents, 1€, 2€	5 cents, 10 cents, 20 cents, 50 cents, 1€, 2€
£ AREA COINS	20p, 50p, 1€, 2€	20p, 50p, 1€, 2€	20p, 50p, 1€, 2€
MECHANICAL REQUIREMENTS			
N° CYCLES	60,000 Machine cycles according to LGA	60,000 Machine cycles according to LGA	60,000 Machine cycles according to LGA



CARD LOCK
DRY AREA USE

CARD LOCK



A versatile model that offers different solutions depending on the customers' needs. On the one hand, members can use the temporary locker without the need for a coin but also in the case of facilities with members and occasional users the lock can combine coin activation and card activation. In this way, the member can use the locker with his/her card and occasional users with a coin.

Card locks prevent locker reservation or personalisation because cards always have to be retrieved by users. They also prevent use by unauthorised person, as the card only works when punched with an exclusive punching machine available only from Ojmar.



CARD LOCK
WET AREA USE



CARD LOCK

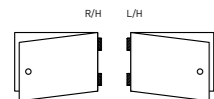


For use in facilities where all of their users have a member card. They automatically prevent reserving lockers as the user has to retrieve it every time. Available for dry and wet applications.

CARD LOCK

DRY AREA USE		WET AREA USE			
RIGHT	LEFT	STANDARD KEYS		SECURITY KEYS	
REF.		RIGHT	LEFT	RIGHT	LEFT
40.0B00T	40.5B00T	40.2B00T	40.7B00T	40.1B00T	40.6B00T

YOU HAVE TO SPECIFY: LANGUAGE



CARD or COIN LOCK

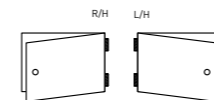


Ideal for mixed facilities with members and day users. They enable the member users to use the locker inserting their card while the occasional users have to insert a coin.

CARD OR COIN. RETURN.

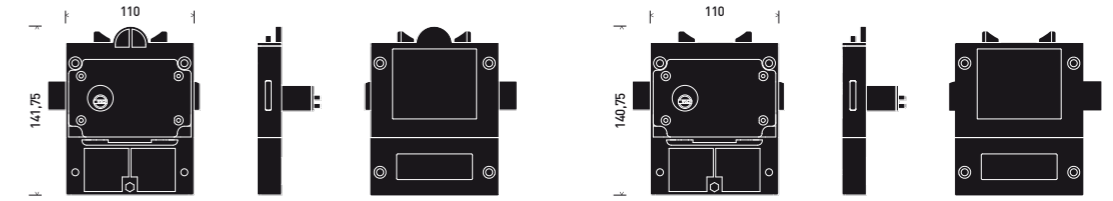
	DRY AREA USE		WET AREA USE			
	RIGHT	LEFT	STANDARD KEYS		SECURITY KEYS	
REF.			RIGHT	LEFT	RIGHT	LEFT
	40.0B00TM	40.5B00TM	40.2B00TM	40.7B00TM	40.1B00TM	40.6B00TM

YOU HAVE TO SPECIFY: COINS / LANGUAGE





CARD AND COIN OPERATED LOCK. MAIN FEATURES



CARD AND COIN OPERATED LOCK COIN PAYMENT



As with the combined card and coin model, the member inserts his/her card and occasional users a coin, the difference being that the coin is retained.

A unique model on the market that allows for giving the member customer an exclusive status compared to occasional users who have to pay to use the locker

3 boxes available depending on the required capacity (see accessory section)

Built in box: capacity for approximately 8 coins.

Medium sized box: Capacity for approximately 50 coins.

Large-sized box: Capacity for approximately 100 coins.

CARD AND COIN. COIN COLLECT WITH BUILT IN BOX

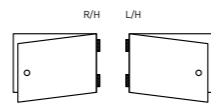
ZAMAK		LATON			
RIGHT	LEFT	STANDARD KEYS		SECURITY KEYS	
40.0C100TM	40.5C100TM	RIGHT	LEFT	RIGHT	LEFT
		40.2C100TM	40.7C100TM	40.1C100TM	40.6C100TM

YOU HAVE TO SPECIFY: COINS / LANGUAGE.

CARD AND COIN. COIN COLLECT. FOR COIN COLLECTING BOX

ZAMAK		LATON			
RIGHT	LEFT	STANDARD KEYS		SECURITY KEYS	
40.0R100TM	40.5R100TM	RIGHT	LEFT	RIGHT	LEFT
		40.2R100TM	40.7R100TM	40.1R100TM	40.6R100TM

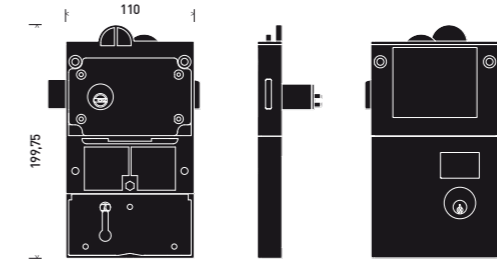
YOU HAVE TO SPECIFY: COINS / LANGUAGE / COIN COLLECTING BOX.



MODEL	DRY AREA USE	WET AREA USE	WET AREA USE
	ZAMAK CYLINDER	STANDARD	SECURITY
MAIN FEATURES			
CYLINDER OR CAM	Interchangeable 10 wafer cylinder	Interchangeable solid brass core with 6 pins in stainless steel.	Interchangeable Solid brass core with 6 pins in stainless steel.
COMBINATIONS	Up to 4000	Up to 1600	Up to 1600
KEY	Standard round head and reversible	Standard	Reversible security key
ANTI-RESERVATION MASTER KEY	No	Yes	Yes
ANTI-BREAKAGE SYSTEM	No	Yes	Yes
EXCLUSIVE PROFILES	No	No	Yes
ASSEMBLY CAM OPTION	No	Yes	Yes
ENTRY LOCKING SYSTEM	Yes	Yes	Yes
COIN RETURN BUTTON	No	No	No
COLOR			
LOCK BODY	Black	Aluminium	Aluminium
SLOT AND BUTTON	Aluminium	Black	Black
ADHESIVE	Silver	Silver	Silver
MATERIALS			
LOCK BODY	Polycarbonate + ABS, High impact and torsion resistance	Polycarbonate + ABS, High impact and torsion resistance	Polycarbonate + ABS, High impact and torsion resistance
INTERNAL PARTS	Zamak	Zamak	Zamak
CYLINDER OR CAM	Painted Zamak	Chrome plated brass	Chrome plated brass
KEY	Nickel plated brass	Nickel plated argentan alloy	Nickel plated brass
SPRINGS	Stainless Steel	Stainless Steel	Stainless Steel
DIMENSIONS			
LOCK BODY DIMENSION	Length 110 mm Height 142 mm Width 21 mm	Length 110 mm Height 142 mm Width 21 mm	Length 110 mm Height 142 mm Width 21 mm
SHOOT DIMENSION	25x5mm	25x5mm	25x5mm
MINIMUM - MAXIMUM DOOR THICKNESS	1mm - 23mm	1mm - 23mm	1mm - 23mm
LATCH STROKE	15.5mm	15.5mm	15,5mm
FIXING HOLES	93.5mm x 93.5mm	93.5mm x 93.5mm	93.5mm x 93.5mm
CYLINDER FIXING HOLE	Ø23	Ø23	Ø23
SCREW FIXING HOLE	M5 PAN HEAD	M5 PAN HEAD	M5 PAN HEAD
KEY THICKNESS	2.5mm	2mm	2.3mm
CARD			
DIMENSIONS	According to Standard ISO 7810	According to Standard ISO 7810	According to Standard ISO 7810
ADAPTABLE TO PAPER CARD	Yes	Yes	Yes
COIN			
MINIMUM - MAXIMUM DIAMETER	20mm - 30mm	20mm - 30mm	20mm - 30mm
MINIMUM - MAXIMUM THICKNESS	1mm - 3.5mm	1mm - 3.5mm	1mm - 3.5mm
€ AREA COINS	5 cents, 10 cents, 20 cents, 50 cents, 1€, 2€	5 cents, 10 cents, 20 cents, 50 cents, 1€, 2€	5 cents, 10 cents, 20 cents, 50 cents, 1€, 2€
£ AREA COINS	20p, 50p, 1€, 2€	20p, 50p, 1€, 2€	20p, 50p, 1€, 2€
MECHANICAL REQUIREMENTS			
N° CYCLES	60,000 Machine cycles according to LGA	60,000 Machine cycles according to LGA	60,000 Machine cycles according to LGA



ACCESSORIES COIN COLLECTING BOX



MODEL	MEDIUM-SIZED	LARGE-SIZED
MAIN FEATURES		
CYLINDER	5 pins in stainless steel.	5 pins in stainless steel.
KEY	Standard	Standard
KEY PROFILE	Different to the lock's profiles.	Different to the lock's profiles.
COLOUR	Dry Area Model: Black Box Wet Area Model: Aluminium Box	Dry Area Model: Black Box Wet Area Model: Aluminium Box
MATERIALS		
BOX AND SUPPORT	Die cast	Die cast
CAM AND CYLINDER	Chrome plated brass	Chrome plated brass
KEY	Nickel plated steel	Nickel plated steel
SPRINGS	Stainless Steel	Stainless Steel
DIMENSIONS		
BOX DIMENSION	Length, 110 mm Height 104 mm Width 21 mm	Length 110 mm Height 104 mm Width 21 mm
DIMENSION COIN LOCK WITH COIN COLLECTING BOX	Length, 110 mm Height 197 mm Width 21 mm MOD: Medium-sized Width 46 mm MOD: Large-sized	Length 110 mm Height 197 mm Width 21 mm MOD: Medium-sized Width 46 mm MOD: Large-sized
BOX SCREW ANCHOR	M4 COUNTERSUNK	M4 COUNTERSUNK
KEY THICKNESS	2.5 mm	2.3 mm
ESTIMATED CAPACITY (€1)	50 Coins	100 Coins

CAJA RECOGEMONEDAS REPRESENTADA MODELO 40 cm

BRACELET

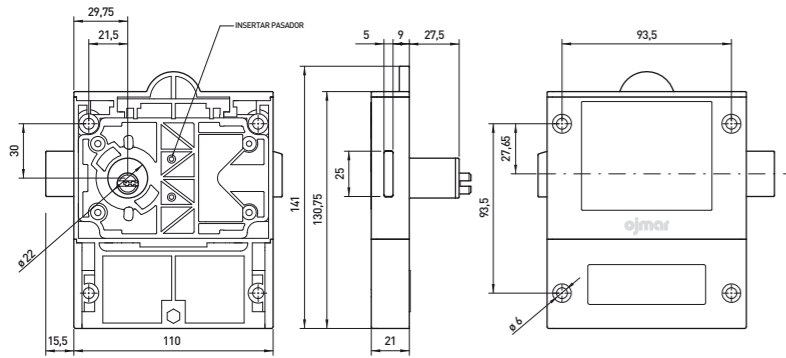


BRACELET	
SPECIFICATIONS	
MATERIAL	TPE
DIMENSIONS	10 x 26 mm
CLOSED BRACELET	Ø 27 mm
APPROXIMATE ADAPTABILITY	15 a 26 mm
NUMBERING	Laser
COLORS	<ul style="list-style-type: none"> Blue Red Yellow Green Orange Black Grey White

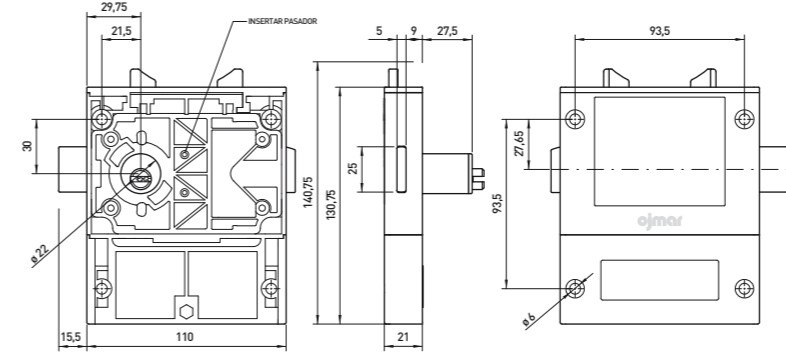


TECHNICAL DRAWINGS

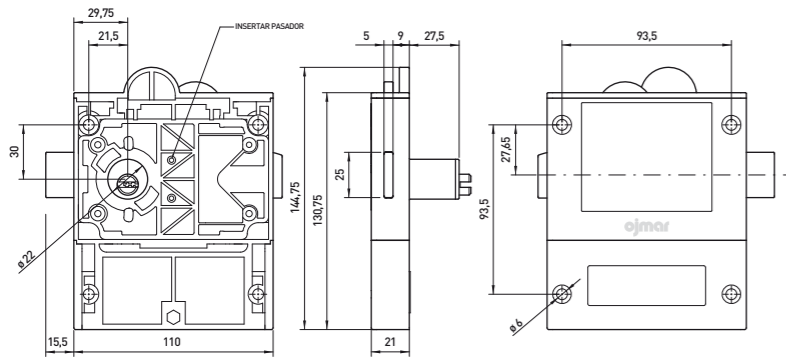
1 COIN LOCK.



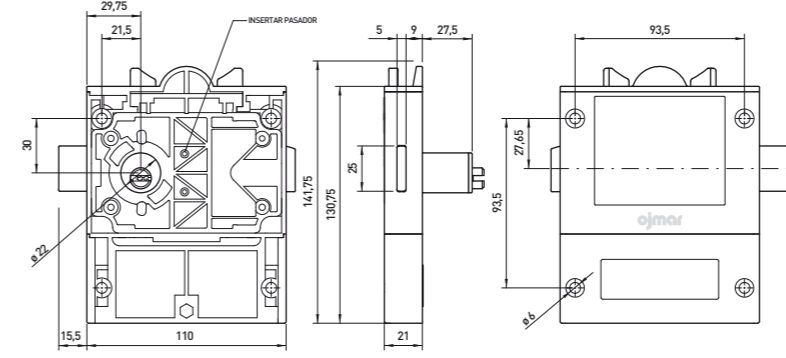
CARD LOCK



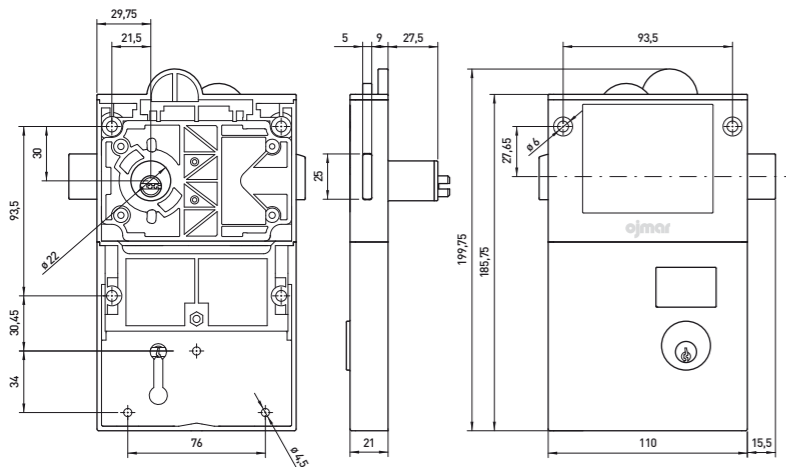
2 COIN LOCK

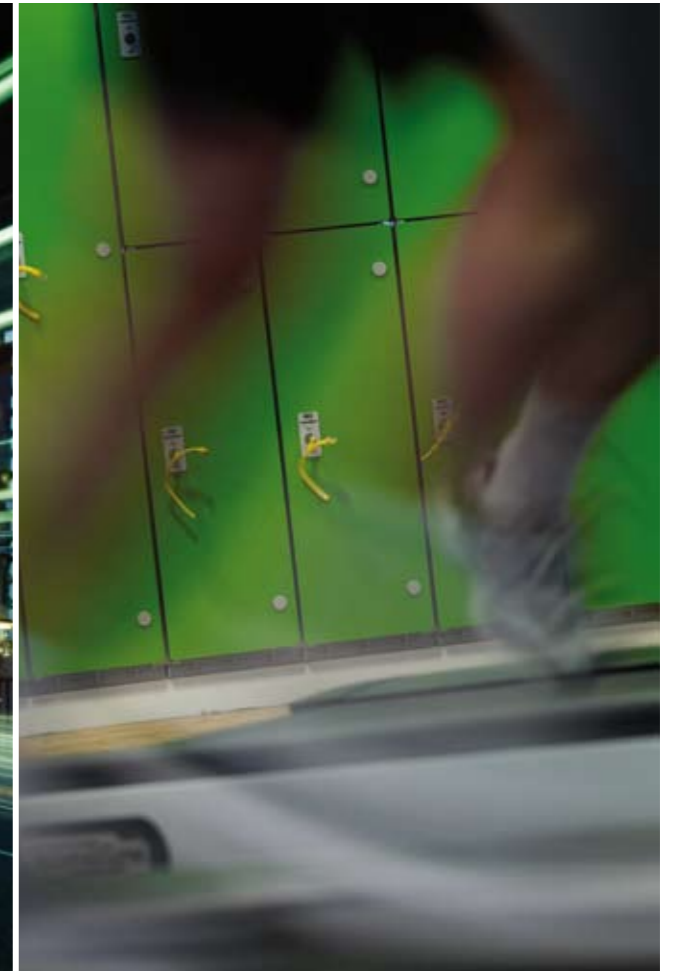


CARD or COIN LOCK



2 COIN LOCK COBRO DE MONEDA.





ojmar

OJMAR, S.A.
Pol. Ind. de Lerun, s/n • 20870 Elgoibar • Spain
Tel: +34 943 748 484 • Fax: +34 943 748 490
www.ojmar.com

