

TA
LJ
FLOORING

LUXURY VINYL
PLANK & TILE



2-3-5 LUXURY VINYL PLANK & TILE

AN EFFORTLESS CURATION OF LUXURY VINYL TO ENHANCE APPLICATION VERSATILITY.

The TAJ 2-3-5 Luxury Vinyl Plank and Tile collection features innovated modern visuals with authentic traits and characteristics that embrace the elements of our natural surroundings. With three thickness options to choose from – 2MM, 3MM and 5MM – harmonious tones combined with visuals of contemporary wood and classic stones seamlessly blend spaces for living, work, wellness, learning and beyond.

SELECT A THICKNESS — 2MM, 3MM OR 5MM.

Each design and color variation is stocked in a standard 3MM thickness, the most universal option for a variety of commercial interior applications.

For spaces that endure light, lived-in traffic, select a 2MM thickness for visual and performance practicality; or for environments requiring acoustical benefits and maximizing comfort underfoot, selecting a 5MM modular acoustic flooring design is suggested for optimizing design and function.

To select the proper flooring thickness for your design project and to review our in stock availability, consult your TAJ Representative or our Customer Service team.

ELM

Fluid and effortless , Elm is a rich flowing pattern with a straight wood grain design purposed for creating spaces with sophisticated character.



TAJ-9109 Elm, Cloud



TAJ-9112 Elm, Wheat



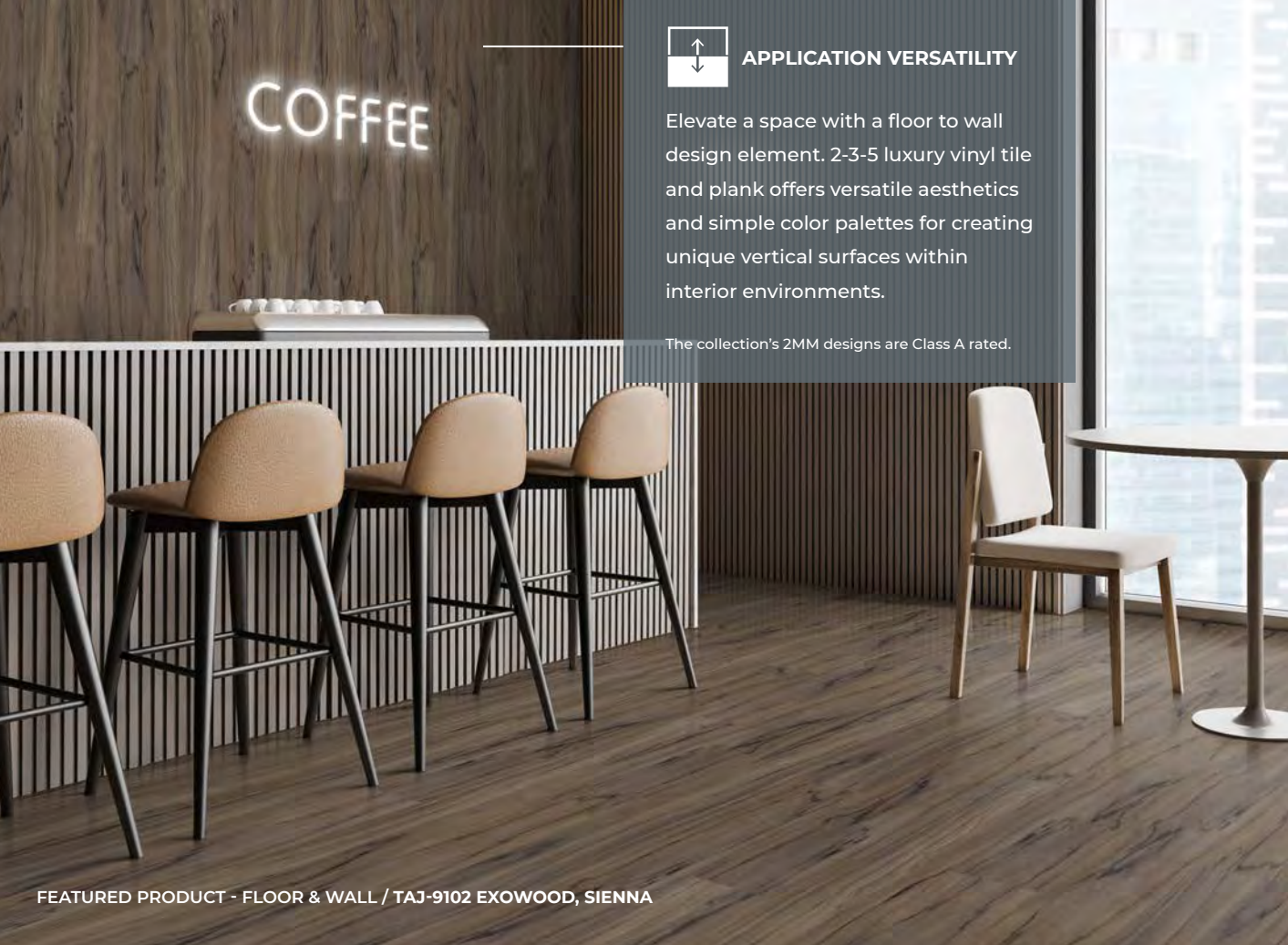
FEATURED PRODUCT / TAJ-9109 ELM, CLOUD



FEATURED PRODUCT / TAJ-9112 ELM, WHEAT

PRODUCT SKU & SIZING GUIDE

	Base Size	2MM, 12MIL	3MM, 20MIL	5MM, 20MIL
Elm, Cloud	7" x 48"	TAJ-9109F2	TAJ-9109F3	TAJ-9109D5
Elm, Wheat	7" x 48"	TAJ-9112F2	TAJ-9112F3	TAJ-9112D5



APPLICATION VERSATILITY

Elevate a space with a floor to wall design element. 2-3-5 luxury vinyl tile and plank offers versatile aesthetics and simple color palettes for creating unique vertical surfaces within interior environments.

The collection's 2MM designs are Class A rated.

2-3-5

EXOWOOD

Center a space around an exotic wood visual. With accents and graining inspired by tigerwood, Exowood features a unique visual with soft neutral gradation.



TAJ-9103 Exowood, Gray



TAJ-9102 Exowood, Sienna



TAJ-9104 Exowood, Umber

PRODUCT SKU & SIZING GUIDE

	Base Size	2MM, 12MIL	3MM, 20MIL	5MM, 20MIL
Exowood, Gray	7" x 48"	TAJ-9103F2	TAJ-9103F3	TAJ-9103D5
Exowood, Sienna	7" x 48"	TAJ-9102F2	TAJ-9102F3	TAJ-9102D5
Exowood, Umber	7" x 48"	TAJ-9104F2	TAJ-9104F3	TAJ-9104D5

FEATURED PRODUCT - FLOOR & WALL / TAJ-9102 EXOWOOD, SIENNA



HEWN

A cut pine wood design with natural and subtle weathered characteristics, Hewn adds warmth to interior environments with its exposed and telling textural look.



TAJ-9106 Hewn, Khaki



TAJ-9107 Hewn, Silver



TAJ-9108 Hewn, Fog

PRODUCT SKU & SIZING GUIDE

	Base Size	2MM, 12MIL	3MM, 20MIL	5MM, 20MIL
Hewn, Khaki	7" x 48"	TAJ-9106F2	TAJ-9106F3	TAJ-9106D5
Hewn, Silver	7" x 48"	TAJ-9107F2	TAJ-9107F3	TAJ-9107D5
Hewn, Fog	7" x 48"	TAJ-9108F2	TAJ-9108F3	TAJ-9108D5

FEATURED PRODUCT / TAJ-9107 HEWN, SILVER

SOAPSTONE

Characterized by an interplay of delicate curved veining, Soapstone presents a distinguished look for exquisite interiors.



TAJ-9139 Soapstone, Light



TAJ-9138 Soapstone, Dark

PRODUCT SKU & SIZING GUIDE

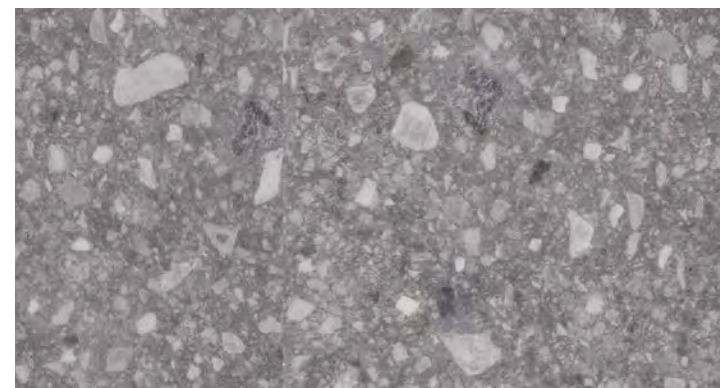
	Base Size	2MM, 12MIL	3MM, 20MIL	5MM, 20MIL
Soapstone, Light	12" x 24"	TAJ-9139W2	TAJ-9139W3	TAJ-9139C5
Soapstone, Light	18" x 36"	-	TAJ-9139G3	TAJ-9139R5
Soapstone, Light	36" x 36"	-	TAJ-9139L3	TAJ-9139N5
Soapstone, Dark	12" x 24"	TAJ-9138W2	TAJ-9138W3	TAJ-9138C5
Soapstone, Dark	18" x 36"	-	TAJ-9138G3	TAJ-9138R5
Soapstone, Dark	36" x 36"	-	TAJ-9138L3	TAJ-9138N5



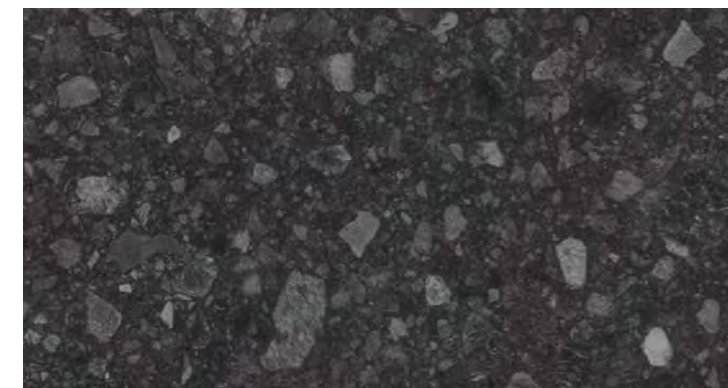
FEATURED PRODUCT / TAJ-9138 SOAPSTONE, DARK

TERRAZZO

Objectively bold, Terrazzo is a distinguished, large-scale visual with authentic compositional characters blending the look of chipped marble, quartz and granite.



TAJ-9141 Terrazzo, Light



TAJ-9140 Terrazzo, Dark

PRODUCT SKU & SIZING GUIDE

	Base Size	2MM, 12MIL	3MM, 20MIL	5MM, 20MIL
Terrazzo, Light	12" x 24"	TAJ-9141W2	TAJ-9141W3	TAJ-9141C5
Terrazzo, Light	18" x 36"	-	TAJ-9141G3	TAJ-9141R5
Terrazzo, Light	36" x 36"	-	TAJ-9141L3	TAJ-9141N5
Terrazzo, Dark	12" x 24"	TAJ-9140W2	TAJ-9140W3	TAJ-9140C5
Terrazzo, Dark	18" x 36"	-	TAJ-9140G3	TAJ-9140R5
Terrazzo, Dark	36" x 36"	-	TAJ-9140L3	TAJ-9140N5



FEATURED PRODUCT / TAJ-9141 TERRAZZO, LIGHT



FEATURED PRODUCT / TAJ-9120 ZEBRA, GRAPHITE

2-3-5

ZEBRA

The contrasting striations of Zebra wood pattern flows in a directional pattern creating an organic yet refined visual.



TAJ-9119 Zebra, Flint



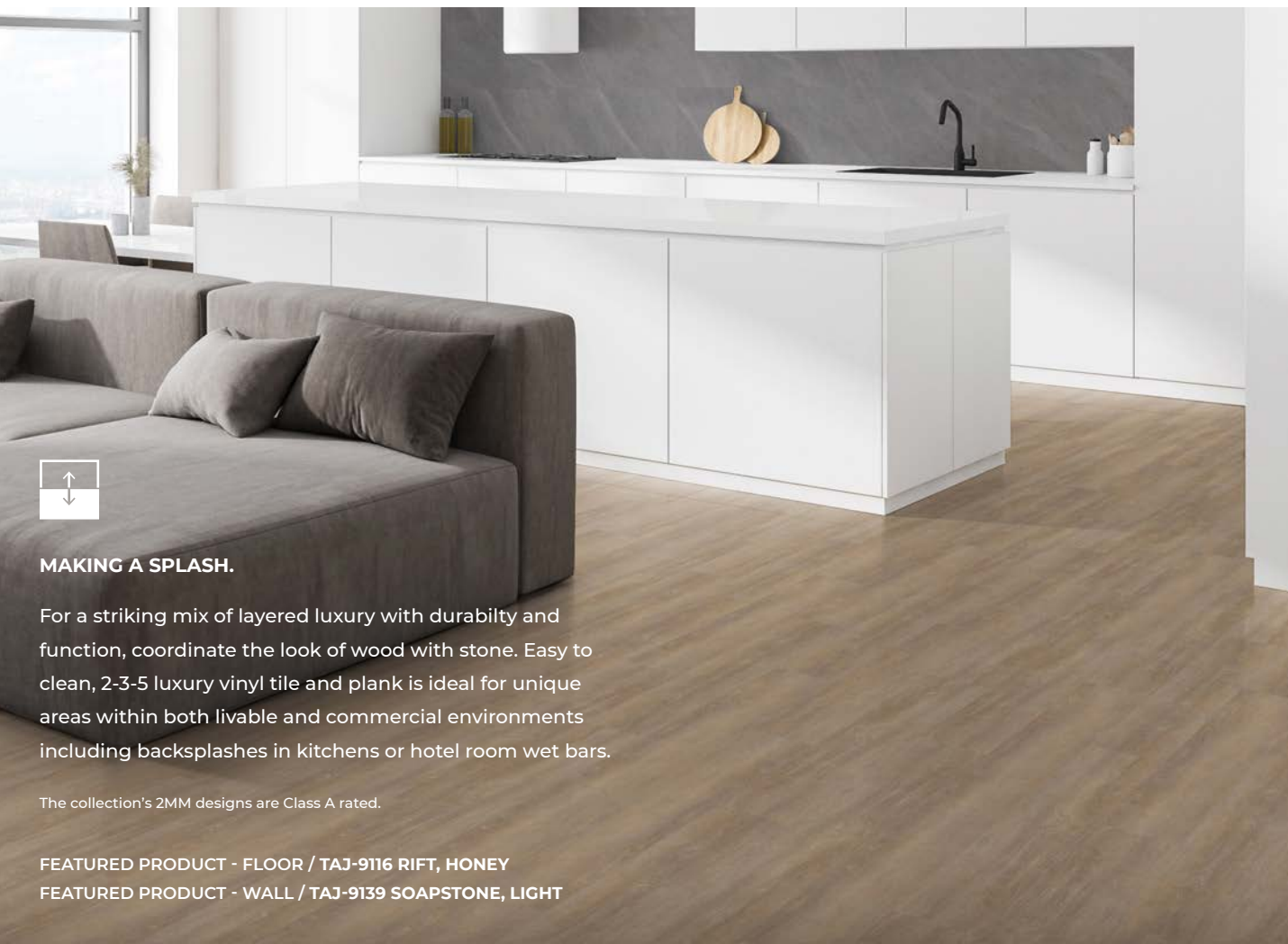
TAJ-9118 Zebra, Carob



TAJ-9120 Zebra, Graphite

PRODUCT SKU & SIZING GUIDE

	Base Size	2MM, 12MIL	3MM, 20MIL	5MM, 20MIL
Zebra, Flint	7" x 48"	TAJ-9119F2	TAJ-9119F3	TAJ-9118D5
Zebra, Carob	7" x 48"	TAJ-9118F2	TAJ-9118F3	TAJ-9118D5
Zebra, Graphite	7" x 48"	TAJ-9120F2	TAJ-9120F3	TAJ-9120D5



MAKING A SPLASH.

For a striking mix of layered luxury with durability and function, coordinate the look of wood with stone. Easy to clean, 2-3-5 luxury vinyl tile and plank is ideal for unique areas within both livable and commercial environments including backsplashes in kitchens or hotel room wet bars.

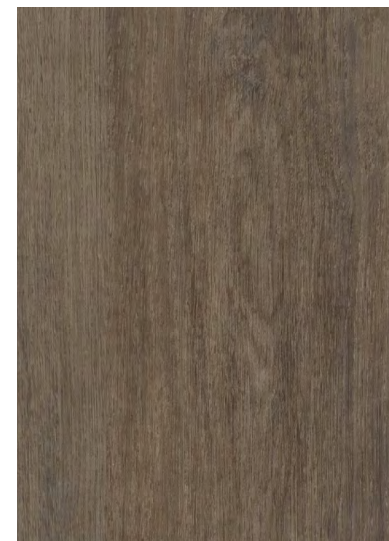
The collection's 2MM designs are Class A rated.

FEATURED PRODUCT - FLOOR / TAJ-9116 RIFT, HONEY

FEATURED PRODUCT - WALL / TAJ-9139 SOAPSTONE, LIGHT

RIFT

Rooted with natural textures, Rift unearths the look of raw yet smooth graining in neutral tones deepening the authenticity and richness of a visual space.



TAJ-9113 Rift, Mushroom



TAJ-9114 Rift, Russet



TAJ-9116 Rift, Honey

PRODUCT SKU & SIZING GUIDE

	Base Size	2MM, 12MIL	3MM, 20MIL	5MM, 20MIL
Rift, Mushroom	7" x 48"	TAJ-9113F2	TAJ-9113F3	TAJ-9113D5
Rift, Russet	7" x 48"	TAJ-9114F2	TAJ-9114F3	TAJ-9114D5
Rift, Honey	7" x 48"	TAJ-9116F2	TAJ-9116F3	TAJ-9116D5

NATIVE

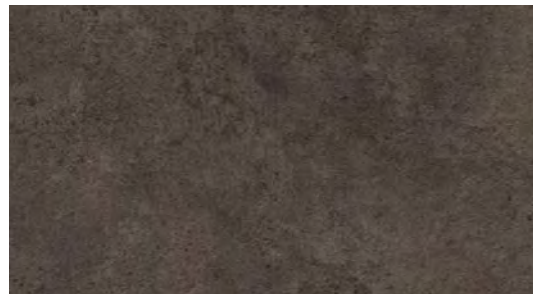
The earthy colors and comforting tones of Native is grounded by its elemental warmth and the subtle textured characteristics of stone.



TAJ-9131 Native, Lapis



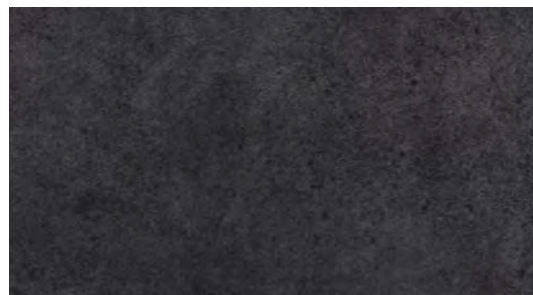
TAJ-9135 Native, Pebble



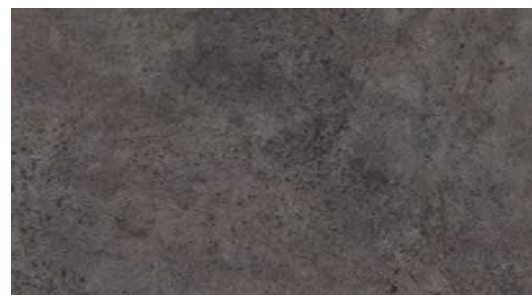
TAJ-9132 Native, Shadow



TAJ-9130 Native, Sand



TAJ-9133 Native, Lead



TAJ-9134 Native, Ash

PRODUCT SKU & SIZING GUIDE

	Base Size	2MM, 12MIL	3MM, 20MIL	5MM, 20MIL
Native, Shadow	12" x 24"	TAJ-9132W2	TAJ-9132W3	TAJ-9132C5
Native, Shadow	18" x 36"	-	TAJ-9132G3	TAJ-9132R5
Native, Shadow	36" x 36"	-	TAJ-9132L3	TAJ-9132N5
Native, Lapis	12" x 24"	TAJ-9131W2	TAJ-9131W3	TAJ-9131C5
Native, Lapis	18" x 36"	-	TAJ-9131G3	TAJ-9131R5
Native, Lapis	36" x 36"	-	TAJ-9131L3	TAJ-9131N5
Native, Lead	12" x 24"	TAJ-9133W2	TAJ-9133W3	TAJ-9133C5
Native, Lead	18" x 36"	-	TAJ-9133G3	TAJ-9133R5
Native, Lead	36" x 36"	-	TAJ-9133L3	TAJ-9133N5



DESIGNED TO SERVE A PURPOSE.

High use commercial areas — from restaurant and cafeteria dining spaces to bar fronts — experience constant impact from tables, chairs and more. The 2-3-5 luxury vinyl plank and tile selection offers the ideal protective wall solution that is naturally scratch, stain and water resistant.

The collection's 2MM designs are Class A rated.

FEATURED PRODUCT - FLOOR / TAJ-9135 NATIVE, PEBBLE

FEATURED PRODUCT - WALL / TAJ-9119 ZEBRA, FLINT

PRODUCT SKU & SIZING GUIDE


	Base Size	2MM, 12MIL	3MM, 20MIL	5MM, 20MIL
Native, Pebble	12" x 24"	TAJ-9135W2	TAJ-9135W3	TAJ-9135C5
Native, Pebble	18" x 36"	-	TAJ-9135G3	TAJ-9135R5
Native, Pebble	36" x 36"	-	TAJ-9135L3	TAJ-9135N5
Native, Sand	12" x 24"	TAJ-9130W2	TAJ-9130W3	TAJ-9130C5
Native, Sand	18" x 36"	-	TAJ-9130G3	TAJ-9130R3
Native, Sand	36" x 36"	-	TAJ-9130L3	TAJ-9130N5
Native, Ash	12" x 24"	TAJ-9134W2	TAJ-9134W3	TAJ-9134C5
Native, Ash	18" x 36"	-	TAJ-9134G3	TAJ-9134R5
Native, Ash	36" x 36"	-	TAJ-9134L3	TAJ-9134N5

TECHNICAL DATA


2-3-5 Luxury Vinyl Plank & Tile products are phthalate-free and designed with a high molecular weight polymerized vinyl wear layer supported by a high strength vinyl backing. Incorporated into the wear surface during the manufacturing process, 2-3-5 tiles and planks are built with a Protech® UV cured polyurethane finish which provides a protective anti-soil coating eliminating the need for floor finishes and improves hygiene and chemical resistance.

	2 MM	3 MM	5 MM
Wear Layer Thickness	12 MIL (0.3MM)	20 MIL (0.5MM)	20 MIL (0.5MM)
Wear Layer Finish	Protech Plus®		
Warranty	15 Year Light Commercial	20 Year Commercial	20 Year Commercial
Classification	ASTM F1700 Class III Type B (embossed)		
ASTM E648 Fire Assistance	Class 1 > 0.45		
ASTM E662 Smoke Density	< 450, Flaming/Non-Flaming		
ASTM F970 Static Load	1500 psi	1500 psi	1000 psi
ASTM C1028-89 Slip Resistance	> 0.6 per ADA		
Chemical & Stain Resistance	Negligible		
FloorScore® Certified	Yes		
LEED	Low Emitting Adhesives IEQ4.1, Low Emitting Coatings IEQ4.2, Low Emitting Material		
Recycled Content	100% Virgin Material, Phthalate Free (no recycled content)		

2MM Flame Spread Rating: ASTM E84 Class A
5MM Impact Sound Conduction: ASTM E492, IIC 57
5MM Airborne Sound Transmission: ASTM E90, STC 62
Installation: Apply with recommended adhesive referenced in the full technical specification.
Manufacturing Plant Certifications: ISO 14001, ISO 9001
Trade Agreements Act (TAA) Compliant
Packaging: Available in the full technical specification.



Scan to access technical information including full warranty, installation and maintenance guides, certifications and more.



VIEW THE COLLECTION ON TAJFLOORING.COM
 Scan to view this collection online and to order sample or get connected with our team for assistance.



FEATURED PRODUCT / TAJ-6527D OAT
 WAVELENGTH MODULAR ACOUSTIC FLOORING | 5MM LVT

CONSIDER ALL SPACES

With hundreds of designs to choose from, TAJ luxury vinyl flooring offers a wide range of colors, patterns, and formats to compliment 2-3-5 flooring within the additional spaces of your interior environment or to create a unique visual by mixing coordinating designs.

For more information, visit tajflooring.com.



**FOR MORE INFORMATION OR TO
REQUEST SAMPLES, VISIT US AT
TAJFLOORING.COM.**

ABOUT TAJ FLOORING

A family-owned business, TAJ Flooring offers a broad selection of highly versatile resilient flooring options for today's modern commercial environments. Our values are focused on service and superior quality finding the ideal solution for interior design needs.

740 Church Road, Elgin, IL 60123
(888) 652-2111 | info@tajflooring.com
tajflooring.com