

SELECT



## LVT PLANKS & TILES

**TAJ** FLOORING  
GLOBAL SOURCING, LOCAL SERVICING



*Feline*

Soft muted wood grain with substantial color variation within the pattern.  
Lots of personality, a bit unpredictable.

TAJ-6065F Siamese



TAJ-6064F Siberian | 7" x 48"



TAJ-6065F Siamese | 7" x 48"



TAJ-6066F Burmese | 7" x 48"



*Canine*

Traditional and true. Strong and steady.  
Time tested wood design ready for any application.

TAJ-6070F Husky



TAJ-6068F Greyhound | 7" x 48"



TAJ-6069F Boxer | 7" x 48"



TAJ-6070F Husky | 7" x 48"



*Equine*

Big and bold wood pattern with unexpected depth of color layering. Beauty with an underlying sense of power and purpose.

TAJ-6060F Welsh



TAJ-6060F Welsh | 7" x 48"



TAJ-6061F Palomino | 7" x 48"



TAJ-6062F Hackney | 7" x 48"



TAJ-6063F Arabian | 7" x 48"



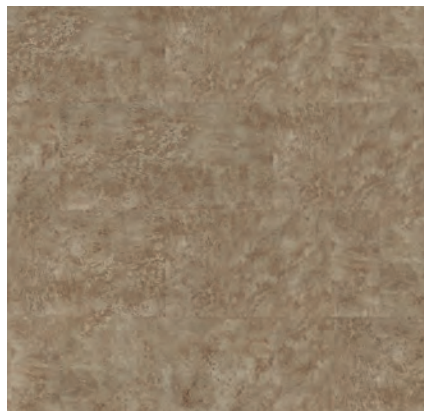
*Plaster*

Large scale tonal pattern that lends itself easily to areas where an abstract stone visual is called for.

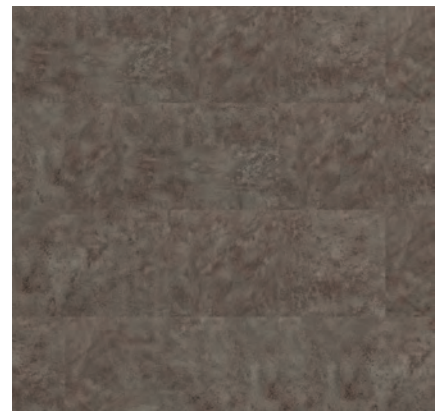
TAJ-2604G Milano



TAJ-2603G Roma | 17.72" x 35.43"



TAJ-2604G Milano | 17.72" x 35.43"



TAJ-2605G Palermo | 17.72" x 35.43"

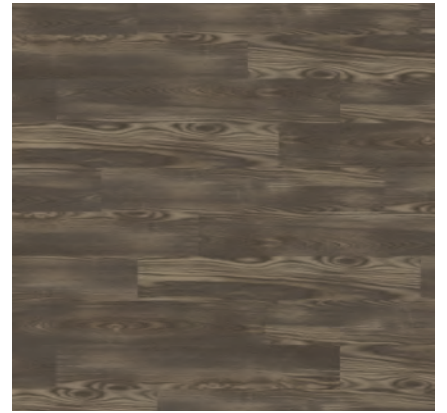




TAJ-8019H Morrison | 6" x 36"



TAJ-8020H Hendrix | 6" x 36"



TAJ-8021H Zeppelin | 6" x 36"



A variety of flame treated wood patterns deliver a unique twist to the appearance of traditional wood visuals. This design approach is blazing the trail.

*Sho Sugi Ban*

TAJ-8020H Hendrix



*Reclaimed*

Random length weathered and worn plank visual in an easy to install work horse construction.  
Casual unassuming elegance.

TAJ-5503H Rustic Strip Multi



TAJ-5502H Rustic Strip Cream | 6" x 36"



TAJ-5503H Rustic Strip Multi | 6" x 36"



TAJ-5504H Rustic Strip Gray | 6" x 36"

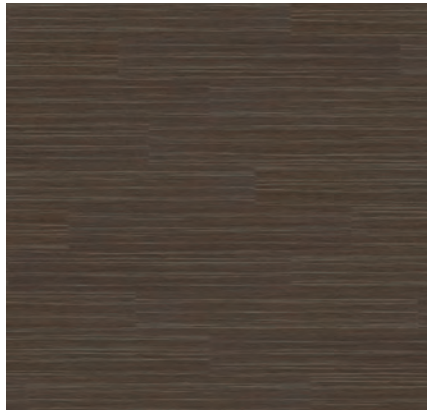




*Linear*

Pattern that reads as wood but brings a decidedly modern and clean feel to the spaces where it is used due to its linear accents.

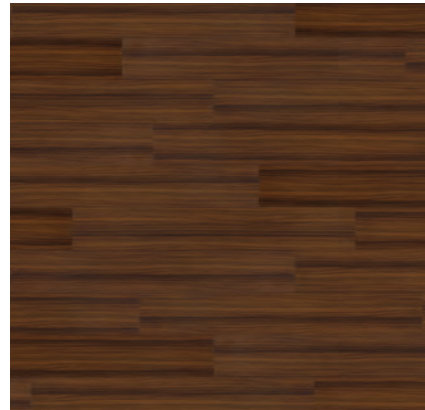
TAJ-6025F Rosewood



TAJ-6025F Rosewood | 7" x 48"



TAJ-6026F Blackbean | 7" x 48"



TAJ-6032F Coccobolo | 7" x 48"



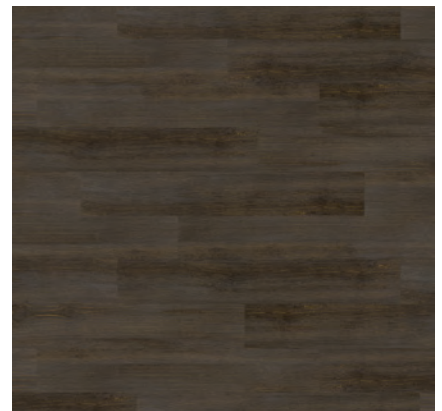
TAJ-8018H Vaughan



TAJ-8016H King | 6" x 36"



TAJ-8017H Clapton | 6" x 36"



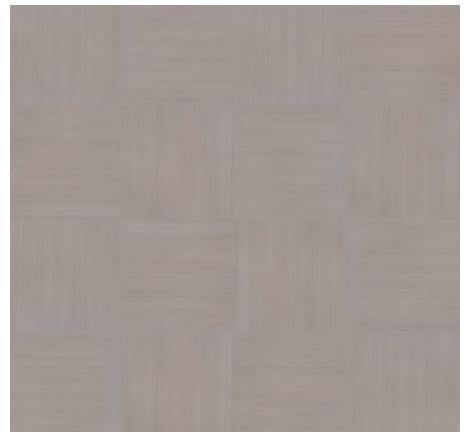
TAJ-8018H Vaughan | 6" x 36"



NVL-2401 Gunmetal | 36" x 36"



MAE-3033 Silicon | 18" x 18"



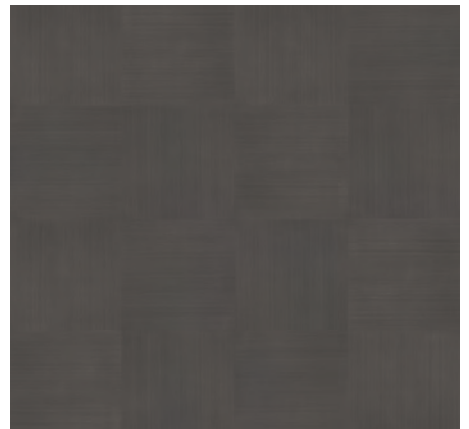
MAE-3034 Chromium | 18" x 18"



NVL-2402 Pewter | 36" x 36"



MAE-3035 Nickel | 18" x 18"



MAE-3036 Carbon | 18" x 18"



TAJ-5501H Rigid Strip Brown | 6" x 36"



TAJ-5500H Rigid Strip Gray | 6" x 36"



NVF-2533 Dove Gray | 7" x 48"



NVH-2701 River Birch | 6" x 36"



TAJ-8024H Manilow | 6" x 36"



TAJ-8023H Jones | 6" x 36"



TAJ-8022H Adele | 6" x 36"



TAJ-5507H Ember Pine | 6" x 36"



TAJ-5506H Natural Pine | 6" x 36"



TAJ-5508H Gray Pine | 6" x 36"



TAJ-5505H White Pine | 6" x 36"



TAJ-6072F Silver Birch | 7" x 48"



TAJ-6071F Merbau | 7" x 48"



TAJ-6067F Wild Walnut | 7" x 48"



TAJ-6024F Stonehenge | 7" x 48"



NVH-2732 Old Oak | 6" x 36"



WAF-2413 Canyon | 7" x 48"



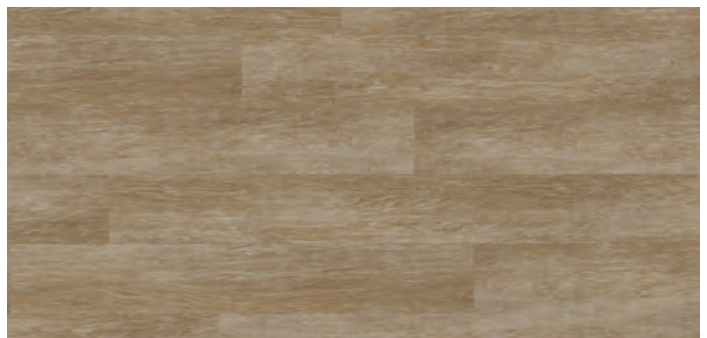
NVF-2501 Wynwood | 7" x 48"



WAF-5135 Mahogany | 7" x 48"



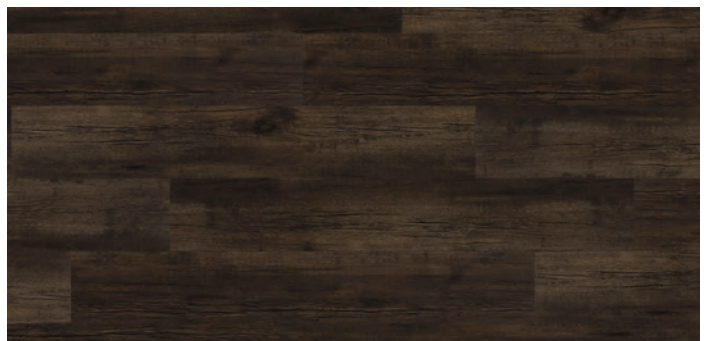
TAJ-4500F Traditional Oak | 7" x 48"



NVF-2534 Limed Wood | 7" x 48"



NVF-2532 Dusky Gray | 7" x 48"



WAF-5136 Foxtail | 7" x 48"



## Technical Specification Information

**Classification:** ASTM F1700 Class III, Type A (Smooth)  
Type B (Embossed)

**Overall Thickness:** 3.0mm, .118", Nominal 1/8"

**Wear Layer Thickness:** 0.5mm, 20mil

**Wear Layer:** High Molecular Weight Polymerized Vinyl

**Finish:** Protech UV Cured Polyurethane

**Edge Detail:** Square Edge (no bevel)

**Warranty:** 15 Year Commercial Warranty

**Maintenance:** Requires no wax, no stripping, no buffing or the use of toxic chemicals

**Static Load Limit:** ASTM F970 modified, passes at 1,100 psi, residual compression maximum 0.005"

**Chemical and Stain Resistance:** ASTM F925, No surface dulling, surface attack or color change with 5% acetic acid, 70% isopropyl alcohol, mineral spirits, 5% sodium hydroxide, 5% hydrochloric acid, 5% ammonia, bleach, 5% phenol, gasoline, sulfuric acid, kerosene, and olive oil.

**Slip Resistance:** ASTM C1028-89, >0.6

**Flame Spread:** ASTM E648, >.45, Class 1

**Smoke Density:** ASTM E662, <450

**Low Emitting Flooring:** LEED IEQ4.3

**Low Emitting Adhesives:** LEED IEQ4.1

**Recycled Content:** Post Consumer and Post Industrial Recycled Content Present\*

**Indoor Air Quality:** CHPS 1350 Certified

**Indoor Air Quality:** FloorScore Certified

**Plant Certifications:** ISO14001, ISO9001

**Trade Agreements Act (TAA) Compliant**



Revit files available for download at [tajflooring.com](http://tajflooring.com).

\*For detail on Health and Environmental Product Declarations and recycled content, please email request to [info@tajflooring.com](mailto:info@tajflooring.com)

Visit us at [tajflooring.com](http://tajflooring.com) for complete specifications and to order samples.



740 Church Road, Elgin, IL 60123  
(888) 652-2111 | [tajflooring.com](http://tajflooring.com)